

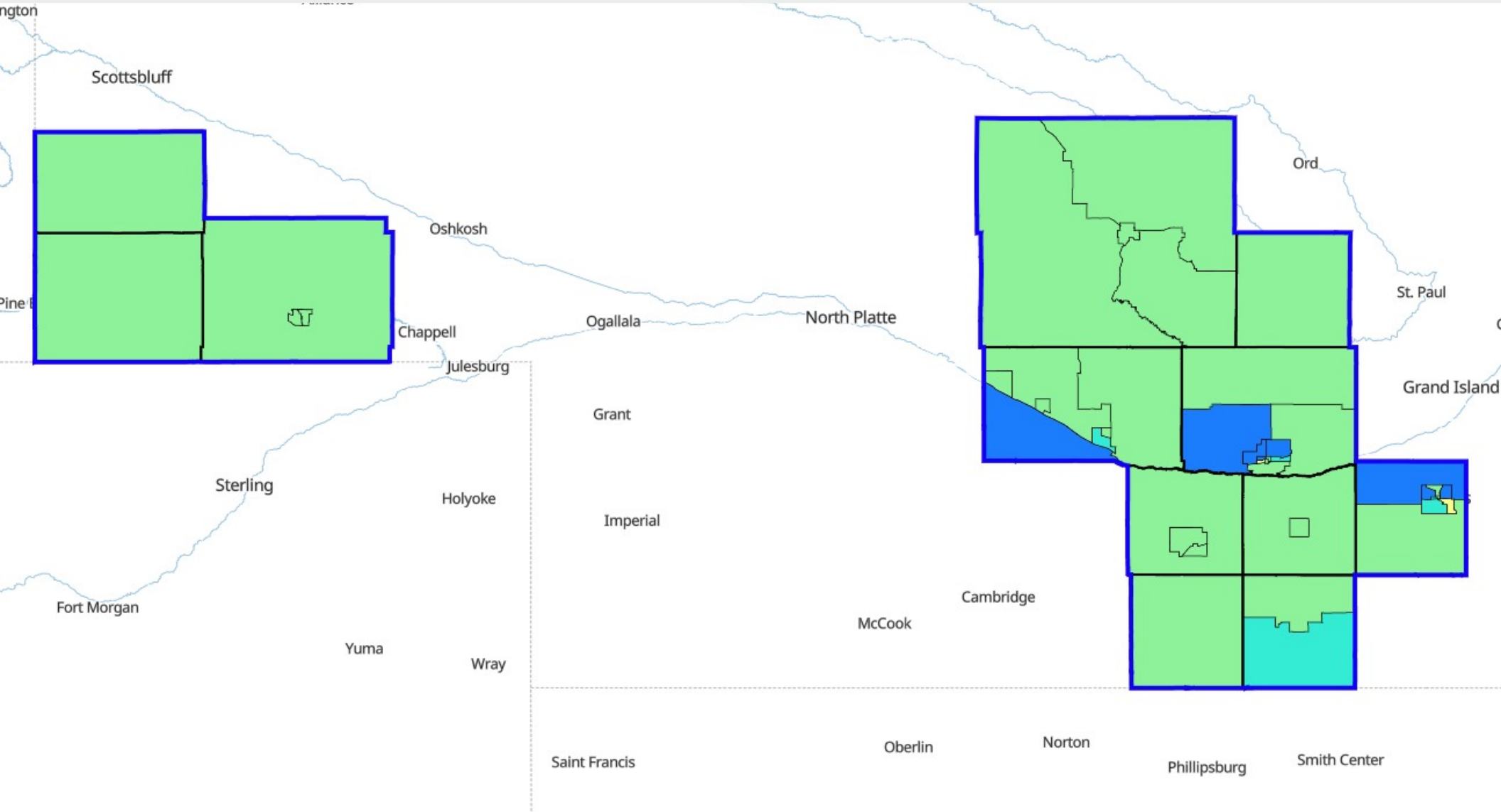
# Assessment Areas

1. Nebraska Assessment Area

Msa Code(s): 99999

Counties: FRANKLIN COUNTY, HARLAN COUNTY, ADAMS COUNTY, KEARNEY COUNTY,  
PHELPS COUNTY, BUFFALO COUNTY, DAWSON COUNTY, SHERMAN COUNTY,  
CUSTER COUNTY, CHEYENNE COUNTY, KIMBALL COUNTY, BANNER COUNTY

# Nebraska Assessment Area



**Boundaries**

- Tract Boundary
- County Boundary
- Nebraska Assessme...

**Tract Income Level**

- Not Known
- Low
- Moderate
- Middle
- Upper

# Nebraska Assessment Area

State Code	State	County Code	County	Tract Code	Tract Income Level	Tract Median Family Income %
31	NEBRASKA (NE)	061	FRANKLIN COUNTY	9646.00	Middle	101.51
31	NEBRASKA (NE)	061	FRANKLIN COUNTY	9647.00	Moderate	72.88
31	NEBRASKA (NE)	083	HARLAN COUNTY	9642.00	Middle	109.73
31	NEBRASKA (NE)	001	ADAMS COUNTY	9654.00	Upper	126.03
31	NEBRASKA (NE)	001	ADAMS COUNTY	9655.00	Middle	117.85
31	NEBRASKA (NE)	001	ADAMS COUNTY	9656.00	Upper	122.87
31	NEBRASKA (NE)	001	ADAMS COUNTY	9657.00	Middle	105.2
31	NEBRASKA (NE)	001	ADAMS COUNTY	9658.00	Moderate	75.6
31	NEBRASKA (NE)	001	ADAMS COUNTY	9659.00	Upper	121.39
31	NEBRASKA (NE)	001	ADAMS COUNTY	9660.00	Moderate	73.07
31	NEBRASKA (NE)	001	ADAMS COUNTY	9661.00	Low	43.29
31	NEBRASKA (NE)	001	ADAMS COUNTY	9662.00	Middle	113.2
31	NEBRASKA (NE)	099	KEARNEY COUNTY	9666.00	Middle	108.95
31	NEBRASKA (NE)	099	KEARNEY COUNTY	9667.00	Middle	104.16
31	NEBRASKA (NE)	137	PHELPS COUNTY	9670.00	Middle	100.46
31	NEBRASKA (NE)	137	PHELPS COUNTY	9671.00	Middle	116.63
31	NEBRASKA (NE)	137	PHELPS COUNTY	9672.00	Middle	116.79
31	NEBRASKA (NE)	019	BUFFALO COUNTY	9689.00	Middle	104.57
31	NEBRASKA (NE)	019	BUFFALO COUNTY	9690.00	Upper	120.34
31	NEBRASKA (NE)	019	BUFFALO COUNTY	9691.00	Middle	95.57
31	NEBRASKA (NE)	019	BUFFALO COUNTY	9692.02	Upper	143.22
31	NEBRASKA (NE)	019	BUFFALO COUNTY	9692.03	Upper	130.34
31	NEBRASKA (NE)	019	BUFFALO COUNTY	9692.04	Upper	150.55
31	NEBRASKA (NE)	019	BUFFALO COUNTY	9693.00	Moderate	69.35

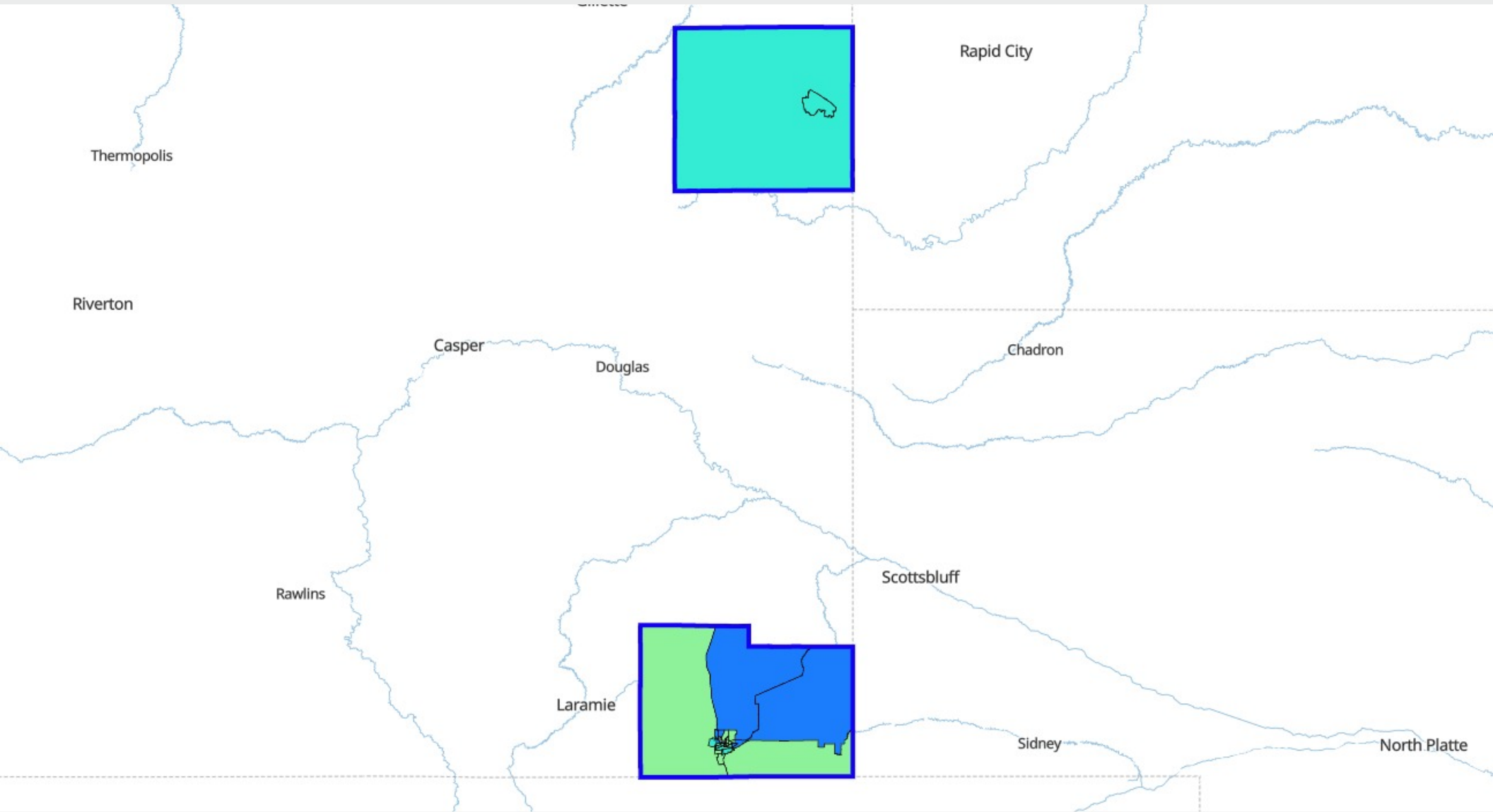
# Nebraska Assessment Area

State Code	State	County Code	County	Tract Code	Tract Income Level	Tract Median Family Income %
31	NEBRASKA (NE)	019	BUFFALO COUNTY	9694.00	Middle	104.81
31	NEBRASKA (NE)	019	BUFFALO COUNTY	9695.00	Middle	95.08
31	NEBRASKA (NE)	019	BUFFALO COUNTY	9696.00	Low	49.11
31	NEBRASKA (NE)	019	BUFFALO COUNTY	9697.00	Middle	108.88
31	NEBRASKA (NE)	047	DAWSON COUNTY	9680.00	Middle	110.26
31	NEBRASKA (NE)	047	DAWSON COUNTY	9681.00	Middle	93.72
31	NEBRASKA (NE)	047	DAWSON COUNTY	9682.00	Middle	119.11
31	NEBRASKA (NE)	047	DAWSON COUNTY	9683.00	Middle	80.62
31	NEBRASKA (NE)	047	DAWSON COUNTY	9684.00	Moderate	69.96
31	NEBRASKA (NE)	047	DAWSON COUNTY	9685.00	Middle	90.71
31	NEBRASKA (NE)	047	DAWSON COUNTY	9686.00	Upper	128.52
31	NEBRASKA (NE)	163	SHERMAN COUNTY	9701.00	Middle	95.24
31	NEBRASKA (NE)	041	CUSTER COUNTY	9717.00	Middle	80.84
31	NEBRASKA (NE)	041	CUSTER COUNTY	9718.00	Middle	85.89
31	NEBRASKA (NE)	041	CUSTER COUNTY	9719.00	Middle	84.22
31	NEBRASKA (NE)	041	CUSTER COUNTY	9720.00	Middle	85.62
31	NEBRASKA (NE)	033	CHEYENNE COUNTY	9548.00	Middle	106.32
31	NEBRASKA (NE)	033	CHEYENNE COUNTY	9549.00	Middle	92.55
31	NEBRASKA (NE)	033	CHEYENNE COUNTY	9550.00	Middle	118.77
31	NEBRASKA (NE)	105	KIMBALL COUNTY	9545.00	Middle	88.9
31	NEBRASKA (NE)	007	BANNER COUNTY	9540.00	Middle	80.76

# Assessment Areas

1. Wyoming Assessment Area  
Msa Code(s): 16940, 99999  
Counties: LARAMIE COUNTY, WESTON COUNTY
  
2. Colorado Assessment Area  
Msa Code(s): 24540, 19740, 14500  
Counties: WELD COUNTY, JEFFERSON COUNTY, ELBERT COUNTY, DOUGLAS COUNTY, DEN-  
VER COUNTY, BROOMFIELD COUNTY, BOULDER COUNTY, ARAPAHOE COUNTY,  
ADAMS COUNTY

# Wyoming Assessment Area



## Boundaries

- Tract Boundary
- County Boundary
- Wyoming Assessment Area

## Tract Income Level

- Not Known
- Low
- Moderate
- Middle
- Upper

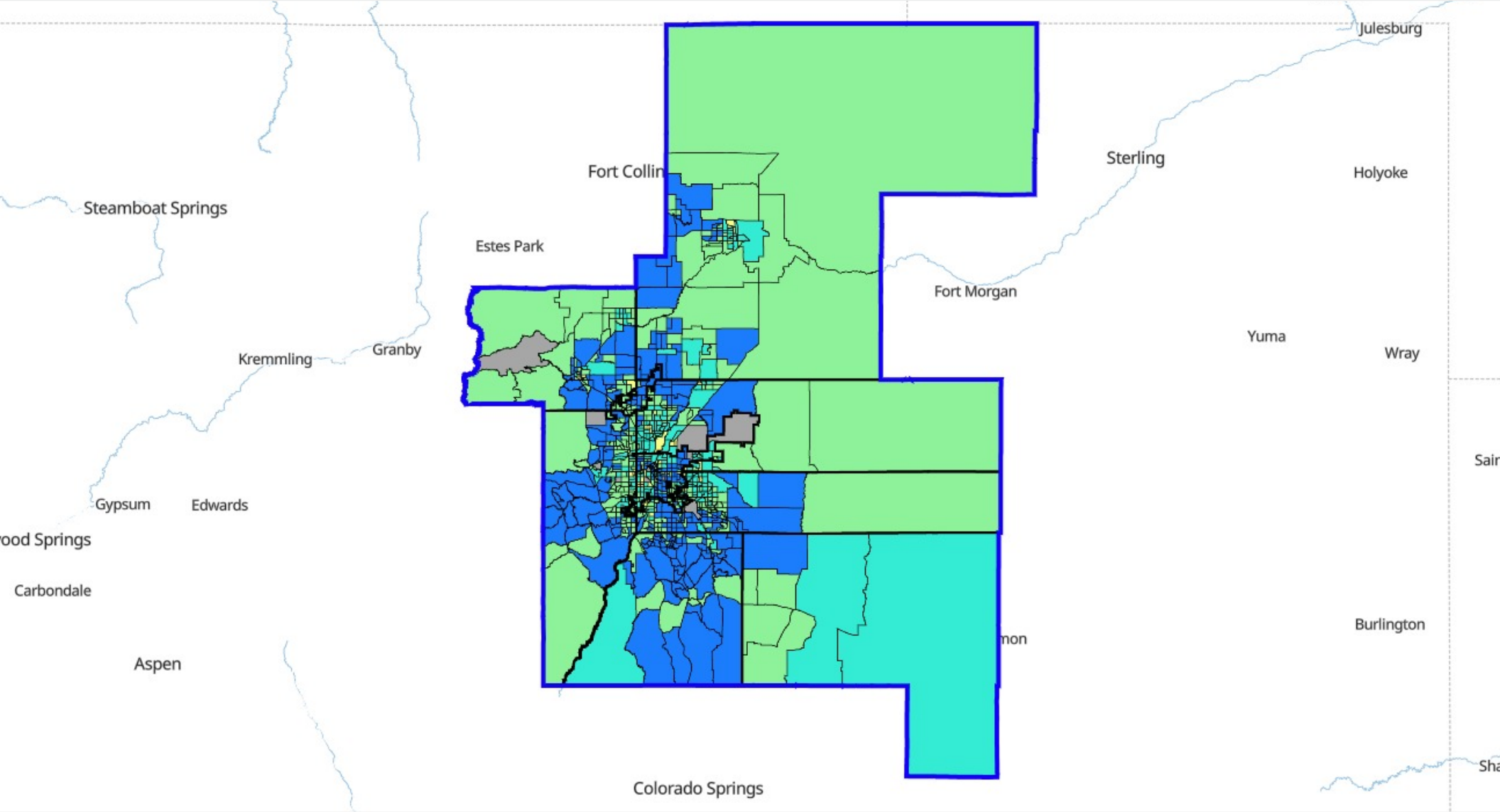
# Wyoming Assessment Area

State Code	State	County Code	County	Tract Code	Tract Income Level	Tract Median Family Income %
56	WYOMING (WY)	021	LARAMIE COUNTY	9808.01	Not Known	0
56	WYOMING (WY)	021	LARAMIE COUNTY	0020.02	Upper	134.42
56	WYOMING (WY)	021	LARAMIE COUNTY	0003.00	Middle	104.24
56	WYOMING (WY)	021	LARAMIE COUNTY	0020.01	Middle	89.02
56	WYOMING (WY)	021	LARAMIE COUNTY	0005.03	Middle	96.23
56	WYOMING (WY)	021	LARAMIE COUNTY	0012.00	Upper	132.84
56	WYOMING (WY)	021	LARAMIE COUNTY	0005.02	Upper	150.69
56	WYOMING (WY)	021	LARAMIE COUNTY	0010.00	Middle	93.25
56	WYOMING (WY)	021	LARAMIE COUNTY	0014.01	Middle	110.06
56	WYOMING (WY)	021	LARAMIE COUNTY	0013.01	Middle	112.69
56	WYOMING (WY)	021	LARAMIE COUNTY	0002.00	Moderate	60.29
56	WYOMING (WY)	021	LARAMIE COUNTY	0009.00	Upper	120.91
56	WYOMING (WY)	021	LARAMIE COUNTY	0013.02	Upper	131.85
56	WYOMING (WY)	021	LARAMIE COUNTY	0014.02	Middle	105.46
56	WYOMING (WY)	021	LARAMIE COUNTY	0007.02	Moderate	67.25
56	WYOMING (WY)	021	LARAMIE COUNTY	0011.00	Moderate	76.93
56	WYOMING (WY)	021	LARAMIE COUNTY	0004.04	Moderate	53.29
56	WYOMING (WY)	021	LARAMIE COUNTY	0006.01	Middle	87.68
56	WYOMING (WY)	021	LARAMIE COUNTY	0019.01	Upper	147.1
56	WYOMING (WY)	021	LARAMIE COUNTY	0015.01	Middle	104.03
56	WYOMING (WY)	021	LARAMIE COUNTY	0015.02	Middle	94.71
56	WYOMING (WY)	021	LARAMIE COUNTY	0004.03	Moderate	51.2
56	WYOMING (WY)	021	LARAMIE COUNTY	0006.02	Middle	108.22
56	WYOMING (WY)	021	LARAMIE COUNTY	0004.01	Middle	83.42

# Wyoming Assessment Area

State Code	State	County Code	County	Tract Code	Tract Income Level	Tract Median Family Income %
56	WYOMING (WY)	021	LARAMIE COUNTY	0007.01	Moderate	78.77
56	WYOMING (WY)	021	LARAMIE COUNTY	0008.00	Middle	102.94
56	WYOMING (WY)	021	LARAMIE COUNTY	0019.02	Middle	119.32
56	WYOMING (WY)	045	WESTON COUNTY	9513.00	Moderate	77.22
56	WYOMING (WY)	045	WESTON COUNTY	9511.00	Moderate	78.84

# Colorado Assessment Area



### Boundaries

- Tract Boundary
- County Boundary
- Colorado Assessme...

### Tract Income Level

- Not Known
- Low
- Moderate
- Middle
- Upper

# Colorado Assessment Area

State Code	State	County Code	County	Tract Code	Tract Income Level	Tract Median Family Income %
08	COLORADO (CO)	123	WELD COUNTY	0001.00	Low	47.3
08	COLORADO (CO)	123	WELD COUNTY	0002.00	Moderate	59.23
08	COLORADO (CO)	123	WELD COUNTY	0003.00	Not Known	0
08	COLORADO (CO)	123	WELD COUNTY	0004.01	Moderate	79.07
08	COLORADO (CO)	123	WELD COUNTY	0004.02	Moderate	71.94
08	COLORADO (CO)	123	WELD COUNTY	0005.01	Low	48.31
08	COLORADO (CO)	123	WELD COUNTY	0005.02	Moderate	51.65
08	COLORADO (CO)	123	WELD COUNTY	0006.00	Low	49.6
08	COLORADO (CO)	123	WELD COUNTY	0007.01	Moderate	62.63
08	COLORADO (CO)	123	WELD COUNTY	0007.03	Moderate	67.65
08	COLORADO (CO)	123	WELD COUNTY	0007.04	Middle	103.84
08	COLORADO (CO)	123	WELD COUNTY	0007.05	Moderate	64.08
08	COLORADO (CO)	123	WELD COUNTY	0008.00	Moderate	57.37
08	COLORADO (CO)	123	WELD COUNTY	0009.00	Moderate	76.81
08	COLORADO (CO)	123	WELD COUNTY	0010.03	Low	44.84
08	COLORADO (CO)	123	WELD COUNTY	0010.04	Moderate	60.38
08	COLORADO (CO)	123	WELD COUNTY	0010.05	Middle	88.44
08	COLORADO (CO)	123	WELD COUNTY	0010.06	Moderate	76.69
08	COLORADO (CO)	123	WELD COUNTY	0011.00	Moderate	79.25
08	COLORADO (CO)	123	WELD COUNTY	0012.01	Moderate	59.51
08	COLORADO (CO)	123	WELD COUNTY	0012.02	Middle	93.87
08	COLORADO (CO)	123	WELD COUNTY	0013.00	Moderate	54.96
08	COLORADO (CO)	123	WELD COUNTY	0014.04	Middle	88.13
08	COLORADO (CO)	123	WELD COUNTY	0014.05	Middle	109.42

# Colorado Assessment Area

State Code	State	County Code	County	Tract Code	Tract Income Level	Tract Median Family Income %
08	COLORADO (CO)	123	WELD COUNTY	0014.06	Middle	96.33
08	COLORADO (CO)	123	WELD COUNTY	0014.07	Upper	127.1
08	COLORADO (CO)	123	WELD COUNTY	0014.08	Upper	126.71
08	COLORADO (CO)	123	WELD COUNTY	0014.09	Middle	98.06
08	COLORADO (CO)	123	WELD COUNTY	0014.10	Upper	130.8
08	COLORADO (CO)	123	WELD COUNTY	0014.11	Upper	128.5
08	COLORADO (CO)	123	WELD COUNTY	0014.12	Middle	114.97
08	COLORADO (CO)	123	WELD COUNTY	0014.13	Moderate	75.24
08	COLORADO (CO)	123	WELD COUNTY	0014.14	Middle	113.14
08	COLORADO (CO)	123	WELD COUNTY	0014.15	Upper	124.02
08	COLORADO (CO)	123	WELD COUNTY	0014.16	Upper	133.92
08	COLORADO (CO)	123	WELD COUNTY	0014.17	Middle	88.17
08	COLORADO (CO)	123	WELD COUNTY	0015.00	Middle	107.85
08	COLORADO (CO)	123	WELD COUNTY	0016.00	Middle	99.2
08	COLORADO (CO)	123	WELD COUNTY	0017.00	Middle	92.68
08	COLORADO (CO)	123	WELD COUNTY	0018.00	Middle	96.69
08	COLORADO (CO)	123	WELD COUNTY	0019.05	Moderate	74.38
08	COLORADO (CO)	123	WELD COUNTY	0019.06	Middle	82.36
08	COLORADO (CO)	123	WELD COUNTY	0019.09	Middle	88.87
08	COLORADO (CO)	123	WELD COUNTY	0019.10	Moderate	79.87
08	COLORADO (CO)	123	WELD COUNTY	0019.11	Moderate	72.34
08	COLORADO (CO)	123	WELD COUNTY	0019.12	Middle	109.64
08	COLORADO (CO)	123	WELD COUNTY	0019.13	Middle	86.97
08	COLORADO (CO)	123	WELD COUNTY	0019.14	Upper	132.89

# Colorado Assessment Area

State Code	State	County Code	County	Tract Code	Tract Income Level	Tract Median Family Income %
08	COLORADO (CO)	123	WELD COUNTY	0020.04	Moderate	79.31
08	COLORADO (CO)	123	WELD COUNTY	0020.05	Upper	153.37
08	COLORADO (CO)	123	WELD COUNTY	0020.06	Upper	215.75
08	COLORADO (CO)	123	WELD COUNTY	0020.07	Upper	138.34
08	COLORADO (CO)	123	WELD COUNTY	0020.08	Upper	163.09
08	COLORADO (CO)	123	WELD COUNTY	0020.09	Upper	176.85
08	COLORADO (CO)	123	WELD COUNTY	0020.10	Middle	87.81
08	COLORADO (CO)	123	WELD COUNTY	0020.11	Upper	135.81
08	COLORADO (CO)	123	WELD COUNTY	0020.12	Upper	154.1
08	COLORADO (CO)	123	WELD COUNTY	0020.13	Upper	143.94
08	COLORADO (CO)	123	WELD COUNTY	0020.14	Middle	112.09
08	COLORADO (CO)	123	WELD COUNTY	0020.15	Upper	129.97
08	COLORADO (CO)	123	WELD COUNTY	0020.16	Middle	89.79
08	COLORADO (CO)	123	WELD COUNTY	0020.17	Upper	180.03
08	COLORADO (CO)	123	WELD COUNTY	0020.18	Upper	155.47
08	COLORADO (CO)	123	WELD COUNTY	0020.19	Middle	116.77
08	COLORADO (CO)	123	WELD COUNTY	0020.20	Upper	136.81
08	COLORADO (CO)	123	WELD COUNTY	0020.21	Upper	123.63
08	COLORADO (CO)	123	WELD COUNTY	0021.01	Middle	95.2
08	COLORADO (CO)	123	WELD COUNTY	0021.04	Upper	172.58
08	COLORADO (CO)	123	WELD COUNTY	0021.05	Middle	106.82
08	COLORADO (CO)	123	WELD COUNTY	0021.06	Upper	124.15
08	COLORADO (CO)	123	WELD COUNTY	0021.07	Upper	138.14
08	COLORADO (CO)	123	WELD COUNTY	0021.08	Upper	137.72

# Colorado Assessment Area

State Code	State	County Code	County	Tract Code	Tract Income Level	Tract Median Family Income %
08	COLORADO (CO)	123	WELD COUNTY	0022.03	Upper	141.3
08	COLORADO (CO)	123	WELD COUNTY	0022.04	Upper	130.86
08	COLORADO (CO)	123	WELD COUNTY	0022.05	Middle	97.43
08	COLORADO (CO)	123	WELD COUNTY	0022.06	Middle	105.27
08	COLORADO (CO)	123	WELD COUNTY	0022.07	Middle	115.04
08	COLORADO (CO)	123	WELD COUNTY	0022.08	Upper	130.94
08	COLORADO (CO)	123	WELD COUNTY	0022.09	Upper	155.62
08	COLORADO (CO)	123	WELD COUNTY	0022.10	Upper	134.1
08	COLORADO (CO)	123	WELD COUNTY	0023.00	Middle	93.65
08	COLORADO (CO)	123	WELD COUNTY	0025.01	Middle	94.63
08	COLORADO (CO)	123	WELD COUNTY	0025.02	Middle	83.36
08	COLORADO (CO)	059	JEFFERSON COUNTY	0098.06	Upper	131.07
08	COLORADO (CO)	059	JEFFERSON COUNTY	0098.07	Middle	111.52
08	COLORADO (CO)	059	JEFFERSON COUNTY	0098.15	Upper	157.99
08	COLORADO (CO)	059	JEFFERSON COUNTY	0098.23	Middle	112.24
08	COLORADO (CO)	059	JEFFERSON COUNTY	0098.24	Middle	98.81
08	COLORADO (CO)	059	JEFFERSON COUNTY	0098.27	Middle	108.16
08	COLORADO (CO)	059	JEFFERSON COUNTY	0098.28	Upper	124.77
08	COLORADO (CO)	059	JEFFERSON COUNTY	0098.29	Middle	99.27
08	COLORADO (CO)	059	JEFFERSON COUNTY	0098.30	Middle	94.94
08	COLORADO (CO)	059	JEFFERSON COUNTY	0098.31	Moderate	60.52
08	COLORADO (CO)	059	JEFFERSON COUNTY	0098.32	Middle	81.33
08	COLORADO (CO)	059	JEFFERSON COUNTY	0098.33	Middle	98.15
08	COLORADO (CO)	059	JEFFERSON COUNTY	0098.34	Middle	90.51

# Colorado Assessment Area

State Code	State	County Code	County	Tract Code	Tract Income Level	Tract Median Family Income %
08	COLORADO (CO)	059	JEFFERSON COUNTY	0098.35	Upper	125.85
08	COLORADO (CO)	059	JEFFERSON COUNTY	0098.36	Upper	147.79
08	COLORADO (CO)	059	JEFFERSON COUNTY	0098.37	Upper	152.25
08	COLORADO (CO)	059	JEFFERSON COUNTY	0098.38	Upper	141.18
08	COLORADO (CO)	059	JEFFERSON COUNTY	0098.39	Middle	109.69
08	COLORADO (CO)	059	JEFFERSON COUNTY	0098.40	Middle	94.14
08	COLORADO (CO)	059	JEFFERSON COUNTY	0098.41	Middle	117.06
08	COLORADO (CO)	059	JEFFERSON COUNTY	0098.42	Upper	141.12
08	COLORADO (CO)	059	JEFFERSON COUNTY	0098.45	Upper	174.41
08	COLORADO (CO)	059	JEFFERSON COUNTY	0098.46	Upper	158.56
08	COLORADO (CO)	059	JEFFERSON COUNTY	0098.47	Upper	131.64
08	COLORADO (CO)	059	JEFFERSON COUNTY	0098.48	Upper	153.69
08	COLORADO (CO)	059	JEFFERSON COUNTY	0098.50	Upper	181.5
08	COLORADO (CO)	059	JEFFERSON COUNTY	0098.51	Upper	123.17
08	COLORADO (CO)	059	JEFFERSON COUNTY	0098.52	Upper	138.92
08	COLORADO (CO)	059	JEFFERSON COUNTY	0098.53	Middle	119.6
08	COLORADO (CO)	059	JEFFERSON COUNTY	0098.54	Upper	146.33
08	COLORADO (CO)	059	JEFFERSON COUNTY	0098.55	Upper	149.24
08	COLORADO (CO)	059	JEFFERSON COUNTY	0098.56	Moderate	67.49
08	COLORADO (CO)	059	JEFFERSON COUNTY	0098.57	Middle	110.99
08	COLORADO (CO)	059	JEFFERSON COUNTY	0098.58	Middle	118.3
08	COLORADO (CO)	059	JEFFERSON COUNTY	0099.01	Middle	86.7
08	COLORADO (CO)	059	JEFFERSON COUNTY	0100.01	Moderate	78.58
08	COLORADO (CO)	059	JEFFERSON COUNTY	0101.00	Moderate	60.04

# Colorado Assessment Area

State Code	State	County Code	County	Tract Code	Tract Income Level	Tract Median Family Income %
08	COLORADO (CO)	059	JEFFERSON COUNTY	0102.05	Upper	121.53
08	COLORADO (CO)	059	JEFFERSON COUNTY	0102.06	Middle	110.11
08	COLORADO (CO)	059	JEFFERSON COUNTY	0102.08	Middle	93.87
08	COLORADO (CO)	059	JEFFERSON COUNTY	0102.09	Moderate	72.81
08	COLORADO (CO)	059	JEFFERSON COUNTY	0102.10	Middle	113.02
08	COLORADO (CO)	059	JEFFERSON COUNTY	0102.11	Middle	90.44
08	COLORADO (CO)	059	JEFFERSON COUNTY	0102.12	Middle	80.72
08	COLORADO (CO)	059	JEFFERSON COUNTY	0102.13	Middle	81.44
08	COLORADO (CO)	059	JEFFERSON COUNTY	0103.03	Middle	89.13
08	COLORADO (CO)	059	JEFFERSON COUNTY	0103.04	Middle	86.7
08	COLORADO (CO)	059	JEFFERSON COUNTY	0103.05	Middle	85.84
08	COLORADO (CO)	059	JEFFERSON COUNTY	0103.06	Middle	82.64
08	COLORADO (CO)	059	JEFFERSON COUNTY	0103.07	Middle	92.13
08	COLORADO (CO)	059	JEFFERSON COUNTY	0103.08	Middle	118.64
08	COLORADO (CO)	059	JEFFERSON COUNTY	0104.02	Moderate	72.21
08	COLORADO (CO)	059	JEFFERSON COUNTY	0104.03	Moderate	69.9
08	COLORADO (CO)	059	JEFFERSON COUNTY	0104.05	Low	49.14
08	COLORADO (CO)	059	JEFFERSON COUNTY	0104.06	Moderate	50.4
08	COLORADO (CO)	059	JEFFERSON COUNTY	0105.02	Middle	96.47
08	COLORADO (CO)	059	JEFFERSON COUNTY	0105.03	Middle	109.72
08	COLORADO (CO)	059	JEFFERSON COUNTY	0105.04	Upper	155.3
08	COLORADO (CO)	059	JEFFERSON COUNTY	0106.03	Middle	89.06
08	COLORADO (CO)	059	JEFFERSON COUNTY	0106.04	Moderate	79.87
08	COLORADO (CO)	059	JEFFERSON COUNTY	0107.01	Middle	95.79

# Colorado Assessment Area

State Code	State	County Code	County	Tract Code	Tract Income Level	Tract Median Family Income %
08	COLORADO (CO)	059	JEFFERSON COUNTY	0107.02	Moderate	62.43
08	COLORADO (CO)	059	JEFFERSON COUNTY	0108.01	Upper	126.93
08	COLORADO (CO)	059	JEFFERSON COUNTY	0109.01	Middle	93.3
08	COLORADO (CO)	059	JEFFERSON COUNTY	0109.02	Moderate	58.18
08	COLORADO (CO)	059	JEFFERSON COUNTY	0110.00	Moderate	69.57
08	COLORADO (CO)	059	JEFFERSON COUNTY	0111.01	Middle	91.85
08	COLORADO (CO)	059	JEFFERSON COUNTY	0111.02	Moderate	65.28
08	COLORADO (CO)	059	JEFFERSON COUNTY	0112.02	Middle	96.13
08	COLORADO (CO)	059	JEFFERSON COUNTY	0113.00	Middle	95.27
08	COLORADO (CO)	059	JEFFERSON COUNTY	0114.01	Low	35.45
08	COLORADO (CO)	059	JEFFERSON COUNTY	0114.02	Moderate	61.47
08	COLORADO (CO)	059	JEFFERSON COUNTY	0115.51	Low	40.43
08	COLORADO (CO)	059	JEFFERSON COUNTY	0115.52	Low	38.39
08	COLORADO (CO)	059	JEFFERSON COUNTY	0116.01	Moderate	79.16
08	COLORADO (CO)	059	JEFFERSON COUNTY	0116.02	Moderate	62.73
08	COLORADO (CO)	059	JEFFERSON COUNTY	0117.01	Middle	93.79
08	COLORADO (CO)	059	JEFFERSON COUNTY	0117.02	Middle	89.53
08	COLORADO (CO)	059	JEFFERSON COUNTY	0117.08	Middle	93.95
08	COLORADO (CO)	059	JEFFERSON COUNTY	0117.09	Middle	84.57
08	COLORADO (CO)	059	JEFFERSON COUNTY	0117.10	Middle	97.17
08	COLORADO (CO)	059	JEFFERSON COUNTY	0117.11	Middle	94.83
08	COLORADO (CO)	059	JEFFERSON COUNTY	0117.12	Middle	100.92
08	COLORADO (CO)	059	JEFFERSON COUNTY	0117.20	Upper	146.31
08	COLORADO (CO)	059	JEFFERSON COUNTY	0117.21	Upper	132.52

# Colorado Assessment Area

State Code	State	County Code	County	Tract Code	Tract Income Level	Tract Median Family Income %
08	COLORADO (CO)	059	JEFFERSON COUNTY	0117.23	Middle	85.08
08	COLORADO (CO)	059	JEFFERSON COUNTY	0117.24	Upper	173.37
08	COLORADO (CO)	059	JEFFERSON COUNTY	0117.25	Middle	119.48
08	COLORADO (CO)	059	JEFFERSON COUNTY	0117.26	Middle	108.74
08	COLORADO (CO)	059	JEFFERSON COUNTY	0117.27	Middle	100.99
08	COLORADO (CO)	059	JEFFERSON COUNTY	0117.28	Middle	106.63
08	COLORADO (CO)	059	JEFFERSON COUNTY	0117.29	Moderate	70.9
08	COLORADO (CO)	059	JEFFERSON COUNTY	0117.30	Moderate	59.92
08	COLORADO (CO)	059	JEFFERSON COUNTY	0117.31	Middle	99.73
08	COLORADO (CO)	059	JEFFERSON COUNTY	0117.32	Moderate	62.35
08	COLORADO (CO)	059	JEFFERSON COUNTY	0117.33	Middle	83.68
08	COLORADO (CO)	059	JEFFERSON COUNTY	0118.03	Moderate	76.19
08	COLORADO (CO)	059	JEFFERSON COUNTY	0118.04	Middle	88.29
08	COLORADO (CO)	059	JEFFERSON COUNTY	0118.06	Moderate	75.98
08	COLORADO (CO)	059	JEFFERSON COUNTY	0118.07	Middle	109.16
08	COLORADO (CO)	059	JEFFERSON COUNTY	0118.08	Moderate	60.31
08	COLORADO (CO)	059	JEFFERSON COUNTY	0119.04	Middle	83.91
08	COLORADO (CO)	059	JEFFERSON COUNTY	0119.51	Middle	87.74
08	COLORADO (CO)	059	JEFFERSON COUNTY	0120.22	Upper	128.75
08	COLORADO (CO)	059	JEFFERSON COUNTY	0120.23	Middle	109.27
08	COLORADO (CO)	059	JEFFERSON COUNTY	0120.24	Upper	120.28
08	COLORADO (CO)	059	JEFFERSON COUNTY	0120.26	Upper	123.19
08	COLORADO (CO)	059	JEFFERSON COUNTY	0120.27	Upper	141.1
08	COLORADO (CO)	059	JEFFERSON COUNTY	0120.30	Upper	137.35

# Colorado Assessment Area

State Code	State	County Code	County	Tract Code	Tract Income Level	Tract Median Family Income %
08	COLORADO (CO)	059	JEFFERSON COUNTY	0120.31	Upper	139.29
08	COLORADO (CO)	059	JEFFERSON COUNTY	0120.32	Upper	137.41
08	COLORADO (CO)	059	JEFFERSON COUNTY	0120.33	Middle	116.56
08	COLORADO (CO)	059	JEFFERSON COUNTY	0120.34	Upper	181.95
08	COLORADO (CO)	059	JEFFERSON COUNTY	0120.35	Upper	168.52
08	COLORADO (CO)	059	JEFFERSON COUNTY	0120.36	Upper	165.7
08	COLORADO (CO)	059	JEFFERSON COUNTY	0120.37	Middle	114.74
08	COLORADO (CO)	059	JEFFERSON COUNTY	0120.38	Middle	98.55
08	COLORADO (CO)	059	JEFFERSON COUNTY	0120.39	Middle	99.67
08	COLORADO (CO)	059	JEFFERSON COUNTY	0120.41	Middle	99.8
08	COLORADO (CO)	059	JEFFERSON COUNTY	0120.42	Middle	113.95
08	COLORADO (CO)	059	JEFFERSON COUNTY	0120.43	Middle	100.41
08	COLORADO (CO)	059	JEFFERSON COUNTY	0120.44	Upper	132.25
08	COLORADO (CO)	059	JEFFERSON COUNTY	0120.45	Upper	142.77
08	COLORADO (CO)	059	JEFFERSON COUNTY	0120.46	Middle	98.36
08	COLORADO (CO)	059	JEFFERSON COUNTY	0120.47	Middle	109.09
08	COLORADO (CO)	059	JEFFERSON COUNTY	0120.48	Middle	104.61
08	COLORADO (CO)	059	JEFFERSON COUNTY	0120.49	Upper	129.58
08	COLORADO (CO)	059	JEFFERSON COUNTY	0120.50	Middle	118.6
08	COLORADO (CO)	059	JEFFERSON COUNTY	0120.51	Middle	115.89
08	COLORADO (CO)	059	JEFFERSON COUNTY	0120.52	Middle	99.65
08	COLORADO (CO)	059	JEFFERSON COUNTY	0120.53	Middle	103.97
08	COLORADO (CO)	059	JEFFERSON COUNTY	0120.54	Upper	147.66
08	COLORADO (CO)	059	JEFFERSON COUNTY	0120.55	Upper	120.34

# Colorado Assessment Area

State Code	State	County Code	County	Tract Code	Tract Income Level	Tract Median Family Income %
08	COLORADO (CO)	059	JEFFERSON COUNTY	0120.57	Middle	98.41
08	COLORADO (CO)	059	JEFFERSON COUNTY	0120.58	Middle	116.63
08	COLORADO (CO)	059	JEFFERSON COUNTY	0120.59	Middle	98.41
08	COLORADO (CO)	059	JEFFERSON COUNTY	0120.60	Middle	92.09
08	COLORADO (CO)	059	JEFFERSON COUNTY	0158.00	Middle	88.45
08	COLORADO (CO)	059	JEFFERSON COUNTY	0159.00	Moderate	69.33
08	COLORADO (CO)	059	JEFFERSON COUNTY	0603.00	Middle	101.27
08	COLORADO (CO)	059	JEFFERSON COUNTY	0604.00	Middle	106.02
08	COLORADO (CO)	059	JEFFERSON COUNTY	0605.01	Upper	147.32
08	COLORADO (CO)	059	JEFFERSON COUNTY	9800.00	Not Known	0
08	COLORADO (CO)	059	JEFFERSON COUNTY	9804.00	Not Known	0
08	COLORADO (CO)	059	JEFFERSON COUNTY	9807.00	Not Known	0
08	COLORADO (CO)	059	JEFFERSON COUNTY	9808.00	Not Known	0
08	COLORADO (CO)	039	ELBERT COUNTY	9611.00	Moderate	67.25
08	COLORADO (CO)	039	ELBERT COUNTY	9612.04	Upper	128.19
08	COLORADO (CO)	039	ELBERT COUNTY	9612.05	Moderate	73.39
08	COLORADO (CO)	039	ELBERT COUNTY	9612.06	Middle	112.08
08	COLORADO (CO)	039	ELBERT COUNTY	9612.07	Middle	115.48
08	COLORADO (CO)	039	ELBERT COUNTY	9612.08	Middle	110.45
08	COLORADO (CO)	039	ELBERT COUNTY	9612.09	Middle	105.95
08	COLORADO (CO)	035	DOUGLAS COUNTY	0139.04	Moderate	72.7
08	COLORADO (CO)	035	DOUGLAS COUNTY	0139.05	Middle	98.09
08	COLORADO (CO)	035	DOUGLAS COUNTY	0139.07	Upper	134.34
08	COLORADO (CO)	035	DOUGLAS COUNTY	0139.09	Middle	109.72

# Colorado Assessment Area

State Code	State	County Code	County	Tract Code	Tract Income Level	Tract Median Family Income %
08	COLORADO (CO)	035	DOUGLAS COUNTY	0139.10	Upper	152.45
08	COLORADO (CO)	035	DOUGLAS COUNTY	0139.11	Upper	141.43
08	COLORADO (CO)	035	DOUGLAS COUNTY	0139.12	Upper	128.26
08	COLORADO (CO)	035	DOUGLAS COUNTY	0139.13	Upper	147.06
08	COLORADO (CO)	035	DOUGLAS COUNTY	0139.14	Upper	139.35
08	COLORADO (CO)	035	DOUGLAS COUNTY	0139.15	Upper	122.38
08	COLORADO (CO)	035	DOUGLAS COUNTY	0140.05	Upper	125.48
08	COLORADO (CO)	035	DOUGLAS COUNTY	0140.06	Upper	155.5
08	COLORADO (CO)	035	DOUGLAS COUNTY	0140.07	Middle	101.24
08	COLORADO (CO)	035	DOUGLAS COUNTY	0140.08	Upper	137.5
08	COLORADO (CO)	035	DOUGLAS COUNTY	0140.09	Upper	128.52
08	COLORADO (CO)	035	DOUGLAS COUNTY	0140.10	Middle	115.6
08	COLORADO (CO)	035	DOUGLAS COUNTY	0140.11	Upper	176.68
08	COLORADO (CO)	035	DOUGLAS COUNTY	0140.13	Upper	146.55
08	COLORADO (CO)	035	DOUGLAS COUNTY	0140.14	Upper	131.43
08	COLORADO (CO)	035	DOUGLAS COUNTY	0140.15	Moderate	79.03
08	COLORADO (CO)	035	DOUGLAS COUNTY	0140.16	Upper	128.19
08	COLORADO (CO)	035	DOUGLAS COUNTY	0140.17	Upper	169.64
08	COLORADO (CO)	035	DOUGLAS COUNTY	0141.07	Upper	130.29
08	COLORADO (CO)	035	DOUGLAS COUNTY	0141.08	Upper	134.23
08	COLORADO (CO)	035	DOUGLAS COUNTY	0141.09	Upper	160.06
08	COLORADO (CO)	035	DOUGLAS COUNTY	0141.10	Middle	118.95
08	COLORADO (CO)	035	DOUGLAS COUNTY	0141.12	Upper	130.02
08	COLORADO (CO)	035	DOUGLAS COUNTY	0141.13	Upper	132.03

# Colorado Assessment Area

State Code	State	County Code	County	Tract Code	Tract Income Level	Tract Median Family Income %
08	COLORADO (CO)	035	DOUGLAS COUNTY	0141.14	Middle	101.05
08	COLORADO (CO)	035	DOUGLAS COUNTY	0141.15	Upper	141.47
08	COLORADO (CO)	035	DOUGLAS COUNTY	0141.16	Upper	126.26
08	COLORADO (CO)	035	DOUGLAS COUNTY	0141.23	Upper	127.65
08	COLORADO (CO)	035	DOUGLAS COUNTY	0141.24	Upper	129.34
08	COLORADO (CO)	035	DOUGLAS COUNTY	0141.25	Upper	166
08	COLORADO (CO)	035	DOUGLAS COUNTY	0141.26	Middle	99.92
08	COLORADO (CO)	035	DOUGLAS COUNTY	0141.27	Upper	177.52
08	COLORADO (CO)	035	DOUGLAS COUNTY	0141.28	Upper	123.29
08	COLORADO (CO)	035	DOUGLAS COUNTY	0141.29	Upper	139.77
08	COLORADO (CO)	035	DOUGLAS COUNTY	0141.30	Upper	138.84
08	COLORADO (CO)	035	DOUGLAS COUNTY	0141.31	Middle	99.88
08	COLORADO (CO)	035	DOUGLAS COUNTY	0141.32	Upper	170.65
08	COLORADO (CO)	035	DOUGLAS COUNTY	0141.33	Upper	138.94
08	COLORADO (CO)	035	DOUGLAS COUNTY	0141.34	Upper	177.58
08	COLORADO (CO)	035	DOUGLAS COUNTY	0141.35	Upper	191.65
08	COLORADO (CO)	035	DOUGLAS COUNTY	0141.38	Middle	105.22
08	COLORADO (CO)	035	DOUGLAS COUNTY	0141.39	Upper	139.35
08	COLORADO (CO)	035	DOUGLAS COUNTY	0141.40	Upper	156.74
08	COLORADO (CO)	035	DOUGLAS COUNTY	0141.41	Upper	176.23
08	COLORADO (CO)	035	DOUGLAS COUNTY	0141.42	Upper	223.22
08	COLORADO (CO)	035	DOUGLAS COUNTY	0141.43	Upper	179.92
08	COLORADO (CO)	035	DOUGLAS COUNTY	0141.44	Upper	165.4
08	COLORADO (CO)	035	DOUGLAS COUNTY	0141.45	Middle	103.48

# Colorado Assessment Area

State Code	State	County Code	County	Tract Code	Tract Income Level	Tract Median Family Income %
08	COLORADO (CO)	035	DOUGLAS COUNTY	0141.46	Upper	126.5
08	COLORADO (CO)	035	DOUGLAS COUNTY	0142.03	Upper	146.71
08	COLORADO (CO)	035	DOUGLAS COUNTY	0142.05	Upper	149.71
08	COLORADO (CO)	035	DOUGLAS COUNTY	0142.06	Middle	110.51
08	COLORADO (CO)	035	DOUGLAS COUNTY	0142.07	Upper	125.17
08	COLORADO (CO)	035	DOUGLAS COUNTY	0142.08	Middle	112.1
08	COLORADO (CO)	035	DOUGLAS COUNTY	0143.00	Moderate	79.82
08	COLORADO (CO)	035	DOUGLAS COUNTY	0144.04	Upper	147.72
08	COLORADO (CO)	035	DOUGLAS COUNTY	0144.05	Upper	128.11
08	COLORADO (CO)	035	DOUGLAS COUNTY	0144.07	Middle	108.22
08	COLORADO (CO)	035	DOUGLAS COUNTY	0144.08	Upper	139.03
08	COLORADO (CO)	035	DOUGLAS COUNTY	0144.09	Upper	147.55
08	COLORADO (CO)	035	DOUGLAS COUNTY	0144.10	Upper	126.48
08	COLORADO (CO)	035	DOUGLAS COUNTY	0145.03	Middle	109.46
08	COLORADO (CO)	035	DOUGLAS COUNTY	0145.04	Middle	80.85
08	COLORADO (CO)	035	DOUGLAS COUNTY	0145.05	Upper	124.44
08	COLORADO (CO)	035	DOUGLAS COUNTY	0145.06	Upper	146.65
08	COLORADO (CO)	035	DOUGLAS COUNTY	0146.02	Upper	130.98
08	COLORADO (CO)	035	DOUGLAS COUNTY	0146.03	Middle	113.38
08	COLORADO (CO)	035	DOUGLAS COUNTY	0146.04	Upper	125.93
08	COLORADO (CO)	031	DENVER COUNTY	0001.02	Upper	127.83
08	COLORADO (CO)	031	DENVER COUNTY	0002.01	Moderate	73.41
08	COLORADO (CO)	031	DENVER COUNTY	0002.02	Moderate	70.08
08	COLORADO (CO)	031	DENVER COUNTY	0003.01	Upper	152.17

# Colorado Assessment Area

State Code	State	County Code	County	Tract Code	Tract Income Level	Tract Median Family Income %
08	COLORADO (CO)	031	DENVER COUNTY	0003.02	Upper	137.61
08	COLORADO (CO)	031	DENVER COUNTY	0003.03	Middle	105.58
08	COLORADO (CO)	031	DENVER COUNTY	0004.01	Middle	106.94
08	COLORADO (CO)	031	DENVER COUNTY	0004.03	Upper	168.46
08	COLORADO (CO)	031	DENVER COUNTY	0004.04	Not Known	0
08	COLORADO (CO)	031	DENVER COUNTY	0005.01	Upper	162.01
08	COLORADO (CO)	031	DENVER COUNTY	0005.03	Not Known	0
08	COLORADO (CO)	031	DENVER COUNTY	0005.04	Middle	116.99
08	COLORADO (CO)	031	DENVER COUNTY	0006.00	Upper	137.76
08	COLORADO (CO)	031	DENVER COUNTY	0007.03	Middle	106.63
08	COLORADO (CO)	031	DENVER COUNTY	0007.04	Middle	112.86
08	COLORADO (CO)	031	DENVER COUNTY	0007.05	Middle	90.49
08	COLORADO (CO)	031	DENVER COUNTY	0007.06	Middle	99.81
08	COLORADO (CO)	031	DENVER COUNTY	0008.00	Low	20.64
08	COLORADO (CO)	031	DENVER COUNTY	0009.02	Moderate	56.04
08	COLORADO (CO)	031	DENVER COUNTY	0009.03	Low	49.81
08	COLORADO (CO)	031	DENVER COUNTY	0009.04	Moderate	50.62
08	COLORADO (CO)	031	DENVER COUNTY	0009.05	Moderate	74.5
08	COLORADO (CO)	031	DENVER COUNTY	0010.00	Not Known	0
08	COLORADO (CO)	031	DENVER COUNTY	0011.01	Middle	92.23
08	COLORADO (CO)	031	DENVER COUNTY	0011.02	Upper	139.04
08	COLORADO (CO)	031	DENVER COUNTY	0013.01	Moderate	56.84
08	COLORADO (CO)	031	DENVER COUNTY	0013.02	Low	45.1
08	COLORADO (CO)	031	DENVER COUNTY	0014.01	Moderate	59.24

# Colorado Assessment Area

State Code	State	County Code	County	Tract Code	Tract Income Level	Tract Median Family Income %
08	COLORADO (CO)	031	DENVER COUNTY	0014.02	Moderate	50.76
08	COLORADO (CO)	031	DENVER COUNTY	0014.03	Moderate	78.07
08	COLORADO (CO)	031	DENVER COUNTY	0015.00	Moderate	51.3
08	COLORADO (CO)	031	DENVER COUNTY	0016.01	Middle	82.93
08	COLORADO (CO)	031	DENVER COUNTY	0016.02	Upper	157.41
08	COLORADO (CO)	031	DENVER COUNTY	0016.03	Not Known	0
08	COLORADO (CO)	031	DENVER COUNTY	0017.03	Upper	126.48
08	COLORADO (CO)	031	DENVER COUNTY	0017.04	Upper	124.29
08	COLORADO (CO)	031	DENVER COUNTY	0017.05	Upper	236.72
08	COLORADO (CO)	031	DENVER COUNTY	0017.06	Not Known	0
08	COLORADO (CO)	031	DENVER COUNTY	0017.07	Upper	242.35
08	COLORADO (CO)	031	DENVER COUNTY	0018.00	Moderate	50.1
08	COLORADO (CO)	031	DENVER COUNTY	0019.01	Moderate	63.69
08	COLORADO (CO)	031	DENVER COUNTY	0020.00	Upper	171.28
08	COLORADO (CO)	031	DENVER COUNTY	0021.01	Upper	125.06
08	COLORADO (CO)	031	DENVER COUNTY	0021.02	Middle	100.3
08	COLORADO (CO)	031	DENVER COUNTY	0023.00	Middle	94.81
08	COLORADO (CO)	031	DENVER COUNTY	0024.02	Middle	110.19
08	COLORADO (CO)	031	DENVER COUNTY	0024.04	Upper	155.41
08	COLORADO (CO)	031	DENVER COUNTY	0024.05	Middle	89.7
08	COLORADO (CO)	031	DENVER COUNTY	0026.02	Upper	128.67
08	COLORADO (CO)	031	DENVER COUNTY	0026.03	Upper	152.97
08	COLORADO (CO)	031	DENVER COUNTY	0026.04	Upper	136.55
08	COLORADO (CO)	031	DENVER COUNTY	0027.04	Middle	87.6

# Colorado Assessment Area

State Code	State	County Code	County	Tract Code	Tract Income Level	Tract Median Family Income %
08	COLORADO (CO)	031	DENVER COUNTY	0027.05	Moderate	68.79
08	COLORADO (CO)	031	DENVER COUNTY	0027.06	Upper	141.02
08	COLORADO (CO)	031	DENVER COUNTY	0027.07	Middle	83.73
08	COLORADO (CO)	031	DENVER COUNTY	0027.08	Moderate	68.96
08	COLORADO (CO)	031	DENVER COUNTY	0027.09	Moderate	70.62
08	COLORADO (CO)	031	DENVER COUNTY	0028.01	Middle	115.95
08	COLORADO (CO)	031	DENVER COUNTY	0028.02	Middle	110.26
08	COLORADO (CO)	031	DENVER COUNTY	0028.04	Upper	129.11
08	COLORADO (CO)	031	DENVER COUNTY	0028.05	Middle	98.23
08	COLORADO (CO)	031	DENVER COUNTY	0029.01	Middle	115.78
08	COLORADO (CO)	031	DENVER COUNTY	0029.02	Upper	157.72
08	COLORADO (CO)	031	DENVER COUNTY	0030.02	Upper	128.72
08	COLORADO (CO)	031	DENVER COUNTY	0030.03	Moderate	78.61
08	COLORADO (CO)	031	DENVER COUNTY	0030.04	Upper	155.8
08	COLORADO (CO)	031	DENVER COUNTY	0030.05	Upper	148.99
08	COLORADO (CO)	031	DENVER COUNTY	0030.06	Upper	175.1
08	COLORADO (CO)	031	DENVER COUNTY	0031.01	Middle	106.87
08	COLORADO (CO)	031	DENVER COUNTY	0031.02	Upper	147.89
08	COLORADO (CO)	031	DENVER COUNTY	0032.02	Middle	114.32
08	COLORADO (CO)	031	DENVER COUNTY	0032.03	Upper	242.35
08	COLORADO (CO)	031	DENVER COUNTY	0032.04	Middle	84.59
08	COLORADO (CO)	031	DENVER COUNTY	0032.05	Upper	179.8
08	COLORADO (CO)	031	DENVER COUNTY	0033.00	Upper	167.52
08	COLORADO (CO)	031	DENVER COUNTY	0034.01	Upper	184.79

# Colorado Assessment Area

State Code	State	County Code	County	Tract Code	Tract Income Level	Tract Median Family Income %
08	COLORADO (CO)	031	DENVER COUNTY	0034.02	Upper	196.25
08	COLORADO (CO)	031	DENVER COUNTY	0035.01	Moderate	53.8
08	COLORADO (CO)	031	DENVER COUNTY	0035.02	Moderate	50.7
08	COLORADO (CO)	031	DENVER COUNTY	0036.01	Low	43.18
08	COLORADO (CO)	031	DENVER COUNTY	0036.02	Moderate	53.25
08	COLORADO (CO)	031	DENVER COUNTY	0036.03	Moderate	79.16
08	COLORADO (CO)	031	DENVER COUNTY	0037.01	Upper	136.56
08	COLORADO (CO)	031	DENVER COUNTY	0037.02	Middle	100.57
08	COLORADO (CO)	031	DENVER COUNTY	0037.03	Not Known	0
08	COLORADO (CO)	031	DENVER COUNTY	0038.01	Not Known	0
08	COLORADO (CO)	031	DENVER COUNTY	0038.02	Upper	180.36
08	COLORADO (CO)	031	DENVER COUNTY	0039.01	Upper	181.88
08	COLORADO (CO)	031	DENVER COUNTY	0039.02	Upper	179.64
08	COLORADO (CO)	031	DENVER COUNTY	0040.02	Upper	130.57
08	COLORADO (CO)	031	DENVER COUNTY	0040.03	Middle	101.24
08	COLORADO (CO)	031	DENVER COUNTY	0040.04	Middle	117.98
08	COLORADO (CO)	031	DENVER COUNTY	0040.05	Middle	86.88
08	COLORADO (CO)	031	DENVER COUNTY	0040.06	Upper	206.85
08	COLORADO (CO)	031	DENVER COUNTY	0041.01	Moderate	52.03
08	COLORADO (CO)	031	DENVER COUNTY	0041.02	Moderate	68.16
08	COLORADO (CO)	031	DENVER COUNTY	0041.03	Upper	152.74
08	COLORADO (CO)	031	DENVER COUNTY	0041.04	Upper	120.13
08	COLORADO (CO)	031	DENVER COUNTY	0041.08	Upper	169.2
08	COLORADO (CO)	031	DENVER COUNTY	0041.09	Upper	138.6

# Colorado Assessment Area

State Code	State	County Code	County	Tract Code	Tract Income Level	Tract Median Family Income %
08	COLORADO (CO)	031	DENVER COUNTY	0041.10	Upper	172.56
08	COLORADO (CO)	031	DENVER COUNTY	0041.11	Upper	163.45
08	COLORADO (CO)	031	DENVER COUNTY	0041.12	Upper	153.72
08	COLORADO (CO)	031	DENVER COUNTY	0041.13	Upper	132.68
08	COLORADO (CO)	031	DENVER COUNTY	0042.01	Upper	165.62
08	COLORADO (CO)	031	DENVER COUNTY	0042.02	Upper	154.24
08	COLORADO (CO)	031	DENVER COUNTY	0043.02	Middle	104.05
08	COLORADO (CO)	031	DENVER COUNTY	0043.03	Upper	242.35
08	COLORADO (CO)	031	DENVER COUNTY	0043.06	Upper	160.33
08	COLORADO (CO)	031	DENVER COUNTY	0043.07	Middle	113.29
08	COLORADO (CO)	031	DENVER COUNTY	0043.08	Middle	93.22
08	COLORADO (CO)	031	DENVER COUNTY	0043.09	Upper	121.75
08	COLORADO (CO)	031	DENVER COUNTY	0043.10	Upper	137.9
08	COLORADO (CO)	031	DENVER COUNTY	0044.03	Moderate	68.27
08	COLORADO (CO)	031	DENVER COUNTY	0044.04	Low	49.92
08	COLORADO (CO)	031	DENVER COUNTY	0044.06	Upper	163
08	COLORADO (CO)	031	DENVER COUNTY	0044.07	Upper	122.64
08	COLORADO (CO)	031	DENVER COUNTY	0045.03	Low	41.57
08	COLORADO (CO)	031	DENVER COUNTY	0045.04	Low	43.96
08	COLORADO (CO)	031	DENVER COUNTY	0045.05	Low	30.7
08	COLORADO (CO)	031	DENVER COUNTY	0045.06	Low	32.24
08	COLORADO (CO)	031	DENVER COUNTY	0046.01	Moderate	71.64
08	COLORADO (CO)	031	DENVER COUNTY	0046.02	Moderate	51.55
08	COLORADO (CO)	031	DENVER COUNTY	0046.03	Moderate	62.43

# Colorado Assessment Area

State Code	State	County Code	County	Tract Code	Tract Income Level	Tract Median Family Income %
08	COLORADO (CO)	031	DENVER COUNTY	0047.00	Middle	86.99
08	COLORADO (CO)	031	DENVER COUNTY	0048.01	Middle	96.85
08	COLORADO (CO)	031	DENVER COUNTY	0050.01	Middle	90.39
08	COLORADO (CO)	031	DENVER COUNTY	0050.03	Middle	88.45
08	COLORADO (CO)	031	DENVER COUNTY	0050.04	Moderate	58.91
08	COLORADO (CO)	031	DENVER COUNTY	0051.02	Middle	95.57
08	COLORADO (CO)	031	DENVER COUNTY	0051.04	Moderate	56.52
08	COLORADO (CO)	031	DENVER COUNTY	0052.00	Middle	90.72
08	COLORADO (CO)	031	DENVER COUNTY	0053.00	Middle	89.91
08	COLORADO (CO)	031	DENVER COUNTY	0055.02	Moderate	66.28
08	COLORADO (CO)	031	DENVER COUNTY	0055.03	Middle	98.07
08	COLORADO (CO)	031	DENVER COUNTY	0067.01	Middle	105.76
08	COLORADO (CO)	031	DENVER COUNTY	0068.04	Upper	129.73
08	COLORADO (CO)	031	DENVER COUNTY	0068.10	Moderate	65.27
08	COLORADO (CO)	031	DENVER COUNTY	0068.12	Middle	96.75
08	COLORADO (CO)	031	DENVER COUNTY	0068.13	Moderate	63.37
08	COLORADO (CO)	031	DENVER COUNTY	0068.14	Moderate	67.85
08	COLORADO (CO)	031	DENVER COUNTY	0068.15	Upper	160.9
08	COLORADO (CO)	031	DENVER COUNTY	0068.16	Middle	88.26
08	COLORADO (CO)	031	DENVER COUNTY	0068.17	Middle	117.53
08	COLORADO (CO)	031	DENVER COUNTY	0068.18	Middle	116.35
08	COLORADO (CO)	031	DENVER COUNTY	0069.02	Middle	85.3
08	COLORADO (CO)	031	DENVER COUNTY	0069.03	Middle	91.38
08	COLORADO (CO)	031	DENVER COUNTY	0070.06	Low	47.43

# Colorado Assessment Area

State Code	State	County Code	County	Tract Code	Tract Income Level	Tract Median Family Income %
08	COLORADO (CO)	031	DENVER COUNTY	0070.13	Middle	87.02
08	COLORADO (CO)	031	DENVER COUNTY	0070.37	Low	42.99
08	COLORADO (CO)	031	DENVER COUNTY	0070.88	Moderate	67.09
08	COLORADO (CO)	031	DENVER COUNTY	0070.90	Low	39.35
08	COLORADO (CO)	031	DENVER COUNTY	0070.91	Moderate	70.28
08	COLORADO (CO)	031	DENVER COUNTY	0083.04	Moderate	68.62
08	COLORADO (CO)	031	DENVER COUNTY	0083.05	Moderate	58.09
08	COLORADO (CO)	031	DENVER COUNTY	0083.06	Moderate	50.59
08	COLORADO (CO)	031	DENVER COUNTY	0083.12	Moderate	63.67
08	COLORADO (CO)	031	DENVER COUNTY	0083.86	Moderate	78.49
08	COLORADO (CO)	031	DENVER COUNTY	0083.87	Middle	83.07
08	COLORADO (CO)	031	DENVER COUNTY	0083.88	Moderate	74.05
08	COLORADO (CO)	031	DENVER COUNTY	0083.89	Middle	90.56
08	COLORADO (CO)	031	DENVER COUNTY	0083.90	Middle	83.57
08	COLORADO (CO)	031	DENVER COUNTY	0083.91	Moderate	76.62
08	COLORADO (CO)	031	DENVER COUNTY	0119.02	Moderate	78.18
08	COLORADO (CO)	031	DENVER COUNTY	0119.03	Middle	107.79
08	COLORADO (CO)	031	DENVER COUNTY	0120.01	Middle	93.7
08	COLORADO (CO)	031	DENVER COUNTY	0120.10	Middle	112.85
08	COLORADO (CO)	031	DENVER COUNTY	0120.15	Moderate	75.78
08	COLORADO (CO)	031	DENVER COUNTY	0120.16	Moderate	63.61
08	COLORADO (CO)	031	DENVER COUNTY	0153.00	Moderate	68.62
08	COLORADO (CO)	031	DENVER COUNTY	0154.00	Middle	86.11
08	COLORADO (CO)	031	DENVER COUNTY	0155.00	Moderate	62.93

# Colorado Assessment Area

State Code	State	County Code	County	Tract Code	Tract Income Level	Tract Median Family Income %
08	COLORADO (CO)	031	DENVER COUNTY	0156.00	Moderate	69.9
08	COLORADO (CO)	031	DENVER COUNTY	0157.00	Moderate	69.72
08	COLORADO (CO)	031	DENVER COUNTY	0158.00	Moderate	54.6
08	COLORADO (CO)	031	DENVER COUNTY	9800.01	Not Known	0
08	COLORADO (CO)	031	DENVER COUNTY	9801.00	Not Known	0
08	COLORADO (CO)	031	DENVER COUNTY	9802.00	Not Known	0
08	COLORADO (CO)	014	BROOMFIELD COUNTY	0300.00	Middle	93.45
08	COLORADO (CO)	014	BROOMFIELD COUNTY	0301.00	Middle	84.64
08	COLORADO (CO)	014	BROOMFIELD COUNTY	0302.00	Middle	95.87
08	COLORADO (CO)	014	BROOMFIELD COUNTY	0303.00	Middle	93.49
08	COLORADO (CO)	014	BROOMFIELD COUNTY	0304.00	Upper	148.47
08	COLORADO (CO)	014	BROOMFIELD COUNTY	0305.00	Upper	170.85
08	COLORADO (CO)	014	BROOMFIELD COUNTY	0306.00	Middle	93.37
08	COLORADO (CO)	014	BROOMFIELD COUNTY	0307.00	Middle	112.96
08	COLORADO (CO)	014	BROOMFIELD COUNTY	0308.00	Upper	125.26
08	COLORADO (CO)	014	BROOMFIELD COUNTY	0309.00	Upper	142.51
08	COLORADO (CO)	014	BROOMFIELD COUNTY	0310.00	Upper	142.17
08	COLORADO (CO)	014	BROOMFIELD COUNTY	0311.01	Middle	102.99
08	COLORADO (CO)	014	BROOMFIELD COUNTY	0311.02	Middle	92.81
08	COLORADO (CO)	014	BROOMFIELD COUNTY	0311.03	Middle	110.92
08	COLORADO (CO)	014	BROOMFIELD COUNTY	0311.04	Middle	103.27
08	COLORADO (CO)	014	BROOMFIELD COUNTY	0312.01	Middle	89.09
08	COLORADO (CO)	014	BROOMFIELD COUNTY	0312.02	Middle	96.78
08	COLORADO (CO)	014	BROOMFIELD COUNTY	0313.00	Upper	214.35

# Colorado Assessment Area

State Code	State	County Code	County	Tract Code	Tract Income Level	Tract Median Family Income %
08	COLORADO (CO)	014	BROOMFIELD COUNTY	0314.01	Middle	109.05
08	COLORADO (CO)	014	BROOMFIELD COUNTY	0314.02	Upper	187.69
08	COLORADO (CO)	014	BROOMFIELD COUNTY	0314.03	Upper	182.18
08	COLORADO (CO)	014	BROOMFIELD COUNTY	9801.00	Not Known	0
08	COLORADO (CO)	014	BROOMFIELD COUNTY	9802.00	Not Known	0
08	COLORADO (CO)	014	BROOMFIELD COUNTY	9803.00	Not Known	0
08	COLORADO (CO)	013	BOULDER COUNTY	0121.01	Upper	170.07
08	COLORADO (CO)	013	BOULDER COUNTY	0121.03	Upper	122.13
08	COLORADO (CO)	013	BOULDER COUNTY	0121.04	Upper	122.75
08	COLORADO (CO)	013	BOULDER COUNTY	0121.05	Middle	91.86
08	COLORADO (CO)	013	BOULDER COUNTY	0121.06	Upper	122.06
08	COLORADO (CO)	013	BOULDER COUNTY	0121.07	Middle	90.12
08	COLORADO (CO)	013	BOULDER COUNTY	0122.01	Upper	146.58
08	COLORADO (CO)	013	BOULDER COUNTY	0122.04	Moderate	74.6
08	COLORADO (CO)	013	BOULDER COUNTY	0122.05	Not Known	0
08	COLORADO (CO)	013	BOULDER COUNTY	0122.06	Upper	124.24
08	COLORADO (CO)	013	BOULDER COUNTY	0122.07	Moderate	64.17
08	COLORADO (CO)	013	BOULDER COUNTY	0122.08	Middle	109.25
08	COLORADO (CO)	013	BOULDER COUNTY	0123.00	Low	38.13
08	COLORADO (CO)	013	BOULDER COUNTY	0124.01	Middle	108.65
08	COLORADO (CO)	013	BOULDER COUNTY	0125.01	Upper	133.64
08	COLORADO (CO)	013	BOULDER COUNTY	0125.05	Upper	161.65
08	COLORADO (CO)	013	BOULDER COUNTY	0125.07	Middle	95.99
08	COLORADO (CO)	013	BOULDER COUNTY	0125.08	Middle	90.51

# Colorado Assessment Area

State Code	State	County Code	County	Tract Code	Tract Income Level	Tract Median Family Income %
08	COLORADO (CO)	013	BOULDER COUNTY	0125.09	Upper	126.74
08	COLORADO (CO)	013	BOULDER COUNTY	0125.10	Upper	143.69
08	COLORADO (CO)	013	BOULDER COUNTY	0125.11	Middle	103.46
08	COLORADO (CO)	013	BOULDER COUNTY	0126.03	Upper	132.52
08	COLORADO (CO)	013	BOULDER COUNTY	0126.05	Low	38.81
08	COLORADO (CO)	013	BOULDER COUNTY	0126.08	Middle	85.79
08	COLORADO (CO)	013	BOULDER COUNTY	0126.09	Low	37.93
08	COLORADO (CO)	013	BOULDER COUNTY	0126.10	Not Known	0
08	COLORADO (CO)	013	BOULDER COUNTY	0127.01	Upper	140.48
08	COLORADO (CO)	013	BOULDER COUNTY	0127.05	Middle	88.98
08	COLORADO (CO)	013	BOULDER COUNTY	0127.07	Moderate	54.94
08	COLORADO (CO)	013	BOULDER COUNTY	0127.08	Upper	142.1
08	COLORADO (CO)	013	BOULDER COUNTY	0127.09	Middle	106.5
08	COLORADO (CO)	013	BOULDER COUNTY	0127.10	Upper	135.91
08	COLORADO (CO)	013	BOULDER COUNTY	0128.01	Upper	129.41
08	COLORADO (CO)	013	BOULDER COUNTY	0128.02	Upper	132.22
08	COLORADO (CO)	013	BOULDER COUNTY	0129.03	Upper	125.73
08	COLORADO (CO)	013	BOULDER COUNTY	0129.04	Middle	111
08	COLORADO (CO)	013	BOULDER COUNTY	0129.05	Moderate	68.52
08	COLORADO (CO)	013	BOULDER COUNTY	0129.07	Middle	87.24
08	COLORADO (CO)	013	BOULDER COUNTY	0130.03	Upper	129.68
08	COLORADO (CO)	013	BOULDER COUNTY	0130.04	Upper	149.1
08	COLORADO (CO)	013	BOULDER COUNTY	0130.05	Upper	127.95
08	COLORADO (CO)	013	BOULDER COUNTY	0130.06	Middle	107.69

# Colorado Assessment Area

State Code	State	County Code	County	Tract Code	Tract Income Level	Tract Median Family Income %
08	COLORADO (CO)	013	BOULDER COUNTY	0132.01	Middle	94.03
08	COLORADO (CO)	013	BOULDER COUNTY	0132.02	Middle	103.54
08	COLORADO (CO)	013	BOULDER COUNTY	0132.05	Upper	145.14
08	COLORADO (CO)	013	BOULDER COUNTY	0132.07	Middle	96.74
08	COLORADO (CO)	013	BOULDER COUNTY	0132.08	Middle	89.79
08	COLORADO (CO)	013	BOULDER COUNTY	0132.10	Moderate	54.94
08	COLORADO (CO)	013	BOULDER COUNTY	0132.11	Upper	125.48
08	COLORADO (CO)	013	BOULDER COUNTY	0132.12	Middle	96.4
08	COLORADO (CO)	013	BOULDER COUNTY	0132.14	Middle	116.68
08	COLORADO (CO)	013	BOULDER COUNTY	0132.15	Middle	99.2
08	COLORADO (CO)	013	BOULDER COUNTY	0133.02	Middle	86.93
08	COLORADO (CO)	013	BOULDER COUNTY	0133.05	Moderate	75.35
08	COLORADO (CO)	013	BOULDER COUNTY	0133.06	Moderate	62.5
08	COLORADO (CO)	013	BOULDER COUNTY	0133.07	Moderate	67.05
08	COLORADO (CO)	013	BOULDER COUNTY	0133.08	Moderate	69.65
08	COLORADO (CO)	013	BOULDER COUNTY	0134.01	Moderate	55.53
08	COLORADO (CO)	013	BOULDER COUNTY	0134.02	Middle	86.42
08	COLORADO (CO)	013	BOULDER COUNTY	0135.03	Moderate	62.54
08	COLORADO (CO)	013	BOULDER COUNTY	0135.05	Moderate	60.22
08	COLORADO (CO)	013	BOULDER COUNTY	0135.06	Middle	92.3
08	COLORADO (CO)	013	BOULDER COUNTY	0135.07	Moderate	71.28
08	COLORADO (CO)	013	BOULDER COUNTY	0135.08	Middle	90.9
08	COLORADO (CO)	013	BOULDER COUNTY	0136.01	Middle	102.19
08	COLORADO (CO)	013	BOULDER COUNTY	0136.02	Middle	102.91

# Colorado Assessment Area

State Code	State	County Code	County	Tract Code	Tract Income Level	Tract Median Family Income %
08	COLORADO (CO)	013	BOULDER COUNTY	0137.03	Not Known	0
08	COLORADO (CO)	013	BOULDER COUNTY	0137.04	Middle	111.2
08	COLORADO (CO)	013	BOULDER COUNTY	0137.05	Middle	86.14
08	COLORADO (CO)	013	BOULDER COUNTY	0137.06	Middle	110.03
08	COLORADO (CO)	013	BOULDER COUNTY	0606.01	Middle	99.13
08	COLORADO (CO)	013	BOULDER COUNTY	0606.02	Upper	130.66
08	COLORADO (CO)	013	BOULDER COUNTY	0607.00	Upper	138.05
08	COLORADO (CO)	013	BOULDER COUNTY	0608.01	Middle	81.95
08	COLORADO (CO)	013	BOULDER COUNTY	0608.02	Low	46.98
08	COLORADO (CO)	013	BOULDER COUNTY	0609.00	Middle	90.75
08	COLORADO (CO)	013	BOULDER COUNTY	0613.00	Upper	152.49
08	COLORADO (CO)	013	BOULDER COUNTY	0614.00	Upper	137.06
08	COLORADO (CO)	005	ARAPAHOE COUNTY	0049.51	Low	40.59
08	COLORADO (CO)	005	ARAPAHOE COUNTY	0049.52	Middle	105.34
08	COLORADO (CO)	005	ARAPAHOE COUNTY	0055.51	Low	46.43
08	COLORADO (CO)	005	ARAPAHOE COUNTY	0055.52	Low	38.67
08	COLORADO (CO)	005	ARAPAHOE COUNTY	0055.53	Middle	83.04
08	COLORADO (CO)	005	ARAPAHOE COUNTY	0056.11	Middle	110.93
08	COLORADO (CO)	005	ARAPAHOE COUNTY	0056.12	Upper	129.45
08	COLORADO (CO)	005	ARAPAHOE COUNTY	0056.14	Middle	102.59
08	COLORADO (CO)	005	ARAPAHOE COUNTY	0056.19	Middle	116.18
08	COLORADO (CO)	005	ARAPAHOE COUNTY	0056.20	Middle	100.57
08	COLORADO (CO)	005	ARAPAHOE COUNTY	0056.21	Upper	142.06
08	COLORADO (CO)	005	ARAPAHOE COUNTY	0056.22	Upper	194.28

# Colorado Assessment Area

State Code	State	County Code	County	Tract Code	Tract Income Level	Tract Median Family Income %
08	COLORADO (CO)	005	ARAPAHOE COUNTY	0056.23	Middle	103.62
08	COLORADO (CO)	005	ARAPAHOE COUNTY	0056.24	Upper	125.73
08	COLORADO (CO)	005	ARAPAHOE COUNTY	0056.25	Middle	109.94
08	COLORADO (CO)	005	ARAPAHOE COUNTY	0056.26	Middle	110.05
08	COLORADO (CO)	005	ARAPAHOE COUNTY	0056.27	Upper	129.73
08	COLORADO (CO)	005	ARAPAHOE COUNTY	0056.28	Upper	126.53
08	COLORADO (CO)	005	ARAPAHOE COUNTY	0056.29	Upper	201.95
08	COLORADO (CO)	005	ARAPAHOE COUNTY	0056.30	Middle	106.17
08	COLORADO (CO)	005	ARAPAHOE COUNTY	0056.31	Middle	112.96
08	COLORADO (CO)	005	ARAPAHOE COUNTY	0056.32	Middle	119.38
08	COLORADO (CO)	005	ARAPAHOE COUNTY	0056.33	Upper	134.86
08	COLORADO (CO)	005	ARAPAHOE COUNTY	0056.34	Middle	111.1
08	COLORADO (CO)	005	ARAPAHOE COUNTY	0056.35	Upper	127.78
08	COLORADO (CO)	005	ARAPAHOE COUNTY	0056.36	Upper	242.35
08	COLORADO (CO)	005	ARAPAHOE COUNTY	0057.01	Moderate	79.92
08	COLORADO (CO)	005	ARAPAHOE COUNTY	0057.02	Moderate	69.84
08	COLORADO (CO)	005	ARAPAHOE COUNTY	0058.00	Upper	132.65
08	COLORADO (CO)	005	ARAPAHOE COUNTY	0059.51	Middle	82.62
08	COLORADO (CO)	005	ARAPAHOE COUNTY	0059.52	Middle	100.33
08	COLORADO (CO)	005	ARAPAHOE COUNTY	0060.00	Middle	96.44
08	COLORADO (CO)	005	ARAPAHOE COUNTY	0061.00	Moderate	79
08	COLORADO (CO)	005	ARAPAHOE COUNTY	0062.00	Middle	84.24
08	COLORADO (CO)	005	ARAPAHOE COUNTY	0063.00	Middle	89.74
08	COLORADO (CO)	005	ARAPAHOE COUNTY	0064.00	Moderate	74.79

# Colorado Assessment Area

State Code	State	County Code	County	Tract Code	Tract Income Level	Tract Median Family Income %
08	COLORADO (CO)	005	ARAPAHOE COUNTY	0065.01	Moderate	62.77
08	COLORADO (CO)	005	ARAPAHOE COUNTY	0065.02	Middle	85.19
08	COLORADO (CO)	005	ARAPAHOE COUNTY	0066.01	Low	41.84
08	COLORADO (CO)	005	ARAPAHOE COUNTY	0066.03	Middle	95.56
08	COLORADO (CO)	005	ARAPAHOE COUNTY	0066.04	Moderate	79.85
08	COLORADO (CO)	005	ARAPAHOE COUNTY	0067.04	Upper	242.35
08	COLORADO (CO)	005	ARAPAHOE COUNTY	0067.05	Upper	242.35
08	COLORADO (CO)	005	ARAPAHOE COUNTY	0067.06	Upper	136.23
08	COLORADO (CO)	005	ARAPAHOE COUNTY	0067.07	Upper	130.44
08	COLORADO (CO)	005	ARAPAHOE COUNTY	0067.08	Upper	155.34
08	COLORADO (CO)	005	ARAPAHOE COUNTY	0067.09	Upper	158.14
08	COLORADO (CO)	005	ARAPAHOE COUNTY	0067.11	Upper	152.93
08	COLORADO (CO)	005	ARAPAHOE COUNTY	0067.12	Upper	187.09
08	COLORADO (CO)	005	ARAPAHOE COUNTY	0067.13	Middle	101.66
08	COLORADO (CO)	005	ARAPAHOE COUNTY	0068.08	Upper	177.65
08	COLORADO (CO)	005	ARAPAHOE COUNTY	0068.15	Middle	84.07
08	COLORADO (CO)	005	ARAPAHOE COUNTY	0068.54	Middle	85.1
08	COLORADO (CO)	005	ARAPAHOE COUNTY	0068.57	Upper	218.82
08	COLORADO (CO)	005	ARAPAHOE COUNTY	0068.59	Middle	95.82
08	COLORADO (CO)	005	ARAPAHOE COUNTY	0068.60	Upper	131.01
08	COLORADO (CO)	005	ARAPAHOE COUNTY	0068.61	Upper	173.27
08	COLORADO (CO)	005	ARAPAHOE COUNTY	0068.62	Upper	158.21
08	COLORADO (CO)	005	ARAPAHOE COUNTY	0068.63	Moderate	74.45
08	COLORADO (CO)	005	ARAPAHOE COUNTY	0068.64	Upper	130.65

# Colorado Assessment Area

State Code	State	County Code	County	Tract Code	Tract Income Level	Tract Median Family Income %
08	COLORADO (CO)	005	ARAPAHOE COUNTY	0071.01	Middle	97.75
08	COLORADO (CO)	005	ARAPAHOE COUNTY	0071.03	Upper	125.84
08	COLORADO (CO)	005	ARAPAHOE COUNTY	0071.06	Upper	134.2
08	COLORADO (CO)	005	ARAPAHOE COUNTY	0071.08	Moderate	77.02
08	COLORADO (CO)	005	ARAPAHOE COUNTY	0071.09	Upper	127.17
08	COLORADO (CO)	005	ARAPAHOE COUNTY	0071.10	Upper	124.44
08	COLORADO (CO)	005	ARAPAHOE COUNTY	0071.11	Moderate	52.58
08	COLORADO (CO)	005	ARAPAHOE COUNTY	0071.12	Upper	156.36
08	COLORADO (CO)	005	ARAPAHOE COUNTY	0071.13	Upper	150.38
08	COLORADO (CO)	005	ARAPAHOE COUNTY	0072.01	Moderate	50.52
08	COLORADO (CO)	005	ARAPAHOE COUNTY	0072.02	Low	49.7
08	COLORADO (CO)	005	ARAPAHOE COUNTY	0073.01	Moderate	54.74
08	COLORADO (CO)	005	ARAPAHOE COUNTY	0073.02	Moderate	52.5
08	COLORADO (CO)	005	ARAPAHOE COUNTY	0074.00	Moderate	59.23
08	COLORADO (CO)	005	ARAPAHOE COUNTY	0075.00	Moderate	50.08
08	COLORADO (CO)	005	ARAPAHOE COUNTY	0076.00	Moderate	58.59
08	COLORADO (CO)	005	ARAPAHOE COUNTY	0077.02	Moderate	70.22
08	COLORADO (CO)	005	ARAPAHOE COUNTY	0077.03	Moderate	60.41
08	COLORADO (CO)	005	ARAPAHOE COUNTY	0077.04	Moderate	58.82
08	COLORADO (CO)	005	ARAPAHOE COUNTY	0151.00	Upper	139.01
08	COLORADO (CO)	005	ARAPAHOE COUNTY	0800.00	Moderate	58.02
08	COLORADO (CO)	005	ARAPAHOE COUNTY	0801.00	Moderate	57.12
08	COLORADO (CO)	005	ARAPAHOE COUNTY	0802.00	Middle	88.55
08	COLORADO (CO)	005	ARAPAHOE COUNTY	0803.00	Middle	94.86

# Colorado Assessment Area

State Code	State	County Code	County	Tract Code	Tract Income Level	Tract Median Family Income %
08	COLORADO (CO)	005	ARAPAHOE COUNTY	0804.00	Middle	85.64
08	COLORADO (CO)	005	ARAPAHOE COUNTY	0805.00	Moderate	77.65
08	COLORADO (CO)	005	ARAPAHOE COUNTY	0806.00	Moderate	52.18
08	COLORADO (CO)	005	ARAPAHOE COUNTY	0807.00	Moderate	77.2
08	COLORADO (CO)	005	ARAPAHOE COUNTY	0808.00	Moderate	59.52
08	COLORADO (CO)	005	ARAPAHOE COUNTY	0809.00	Moderate	78.6
08	COLORADO (CO)	005	ARAPAHOE COUNTY	0810.01	Low	35.87
08	COLORADO (CO)	005	ARAPAHOE COUNTY	0810.02	Low	49.94
08	COLORADO (CO)	005	ARAPAHOE COUNTY	0811.01	Moderate	64.39
08	COLORADO (CO)	005	ARAPAHOE COUNTY	0811.02	Moderate	57.82
08	COLORADO (CO)	005	ARAPAHOE COUNTY	0812.00	Moderate	57.58
08	COLORADO (CO)	005	ARAPAHOE COUNTY	0813.00	Middle	87.88
08	COLORADO (CO)	005	ARAPAHOE COUNTY	0814.00	Moderate	79.29
08	COLORADO (CO)	005	ARAPAHOE COUNTY	0815.00	Moderate	59.9
08	COLORADO (CO)	005	ARAPAHOE COUNTY	0816.00	Moderate	73.35
08	COLORADO (CO)	005	ARAPAHOE COUNTY	0817.00	Upper	160.02
08	COLORADO (CO)	005	ARAPAHOE COUNTY	0818.00	Moderate	50.45
08	COLORADO (CO)	005	ARAPAHOE COUNTY	0819.00	Moderate	59.86
08	COLORADO (CO)	005	ARAPAHOE COUNTY	0820.00	Moderate	51.51
08	COLORADO (CO)	005	ARAPAHOE COUNTY	0821.00	Moderate	72.4
08	COLORADO (CO)	005	ARAPAHOE COUNTY	0822.00	Moderate	65.06
08	COLORADO (CO)	005	ARAPAHOE COUNTY	0823.00	Moderate	65.43
08	COLORADO (CO)	005	ARAPAHOE COUNTY	0824.00	Moderate	56.95
08	COLORADO (CO)	005	ARAPAHOE COUNTY	0825.00	Middle	86.72

# Colorado Assessment Area

State Code	State	County Code	County	Tract Code	Tract Income Level	Tract Median Family Income %
08	COLORADO (CO)	005	ARAPAHOE COUNTY	0826.00	Moderate	67.5
08	COLORADO (CO)	005	ARAPAHOE COUNTY	0827.00	Middle	87.52
08	COLORADO (CO)	005	ARAPAHOE COUNTY	0828.00	Moderate	74.73
08	COLORADO (CO)	005	ARAPAHOE COUNTY	0829.00	Middle	95.67
08	COLORADO (CO)	005	ARAPAHOE COUNTY	0830.00	Middle	110.45
08	COLORADO (CO)	005	ARAPAHOE COUNTY	0831.00	Moderate	76.3
08	COLORADO (CO)	005	ARAPAHOE COUNTY	0832.01	Middle	115.98
08	COLORADO (CO)	005	ARAPAHOE COUNTY	0832.02	Middle	114.92
08	COLORADO (CO)	005	ARAPAHOE COUNTY	0833.00	Middle	90.13
08	COLORADO (CO)	005	ARAPAHOE COUNTY	0834.00	Middle	80.42
08	COLORADO (CO)	005	ARAPAHOE COUNTY	0835.00	Moderate	74.95
08	COLORADO (CO)	005	ARAPAHOE COUNTY	0836.00	Moderate	68.49
08	COLORADO (CO)	005	ARAPAHOE COUNTY	0837.00	Upper	121.03
08	COLORADO (CO)	005	ARAPAHOE COUNTY	0838.00	Middle	82.74
08	COLORADO (CO)	005	ARAPAHOE COUNTY	0839.00	Middle	91.36
08	COLORADO (CO)	005	ARAPAHOE COUNTY	0840.00	Middle	92.47
08	COLORADO (CO)	005	ARAPAHOE COUNTY	0841.00	Moderate	75.95
08	COLORADO (CO)	005	ARAPAHOE COUNTY	0842.00	Middle	83.29
08	COLORADO (CO)	005	ARAPAHOE COUNTY	0843.00	Middle	96.28
08	COLORADO (CO)	005	ARAPAHOE COUNTY	0844.00	Middle	84.83
08	COLORADO (CO)	005	ARAPAHOE COUNTY	0845.00	Moderate	61.28
08	COLORADO (CO)	005	ARAPAHOE COUNTY	0846.00	Middle	80.35
08	COLORADO (CO)	005	ARAPAHOE COUNTY	0847.00	Middle	89.26
08	COLORADO (CO)	005	ARAPAHOE COUNTY	0848.00	Middle	94.22

# Colorado Assessment Area

State Code	State	County Code	County	Tract Code	Tract Income Level	Tract Median Family Income %
08	COLORADO (CO)	005	ARAPAHOE COUNTY	0849.00	Upper	151.75
08	COLORADO (CO)	005	ARAPAHOE COUNTY	0850.00	Upper	128.25
08	COLORADO (CO)	005	ARAPAHOE COUNTY	0851.00	Upper	177.37
08	COLORADO (CO)	005	ARAPAHOE COUNTY	0852.00	Upper	159.7
08	COLORADO (CO)	005	ARAPAHOE COUNTY	0853.00	Upper	148.76
08	COLORADO (CO)	005	ARAPAHOE COUNTY	0854.00	Upper	132.51
08	COLORADO (CO)	005	ARAPAHOE COUNTY	0855.00	Middle	117.13
08	COLORADO (CO)	005	ARAPAHOE COUNTY	0856.00	Upper	144.22
08	COLORADO (CO)	005	ARAPAHOE COUNTY	0857.00	Middle	89.34
08	COLORADO (CO)	005	ARAPAHOE COUNTY	0858.00	Middle	112.85
08	COLORADO (CO)	005	ARAPAHOE COUNTY	0859.00	Middle	113.81
08	COLORADO (CO)	005	ARAPAHOE COUNTY	0860.01	Middle	111.63
08	COLORADO (CO)	005	ARAPAHOE COUNTY	0860.02	Moderate	72.19
08	COLORADO (CO)	005	ARAPAHOE COUNTY	0861.00	Middle	98
08	COLORADO (CO)	005	ARAPAHOE COUNTY	0862.00	Upper	123.33
08	COLORADO (CO)	005	ARAPAHOE COUNTY	0863.00	Middle	93.99
08	COLORADO (CO)	005	ARAPAHOE COUNTY	0864.00	Upper	193.79
08	COLORADO (CO)	005	ARAPAHOE COUNTY	0865.00	Middle	106.46
08	COLORADO (CO)	005	ARAPAHOE COUNTY	0866.00	Middle	97.45
08	COLORADO (CO)	005	ARAPAHOE COUNTY	0867.00	Upper	169.11
08	COLORADO (CO)	005	ARAPAHOE COUNTY	0868.01	Moderate	62.99
08	COLORADO (CO)	005	ARAPAHOE COUNTY	0868.02	Middle	95.63
08	COLORADO (CO)	005	ARAPAHOE COUNTY	0869.00	Low	44.17
08	COLORADO (CO)	005	ARAPAHOE COUNTY	0870.00	Low	47.45

# Colorado Assessment Area

State Code	State	County Code	County	Tract Code	Tract Income Level	Tract Median Family Income %
08	COLORADO (CO)	005	ARAPAHOE COUNTY	0871.00	Moderate	53.11
08	COLORADO (CO)	005	ARAPAHOE COUNTY	0872.00	Moderate	52.91
08	COLORADO (CO)	005	ARAPAHOE COUNTY	0873.01	Moderate	63.04
08	COLORADO (CO)	005	ARAPAHOE COUNTY	0873.02	Middle	91.7
08	COLORADO (CO)	005	ARAPAHOE COUNTY	9800.00	Not Known	0
08	COLORADO (CO)	001	ADAMS COUNTY	0078.01	Low	36.77
08	COLORADO (CO)	001	ADAMS COUNTY	0078.02	Low	40.25
08	COLORADO (CO)	001	ADAMS COUNTY	0079.00	Low	48.35
08	COLORADO (CO)	001	ADAMS COUNTY	0080.00	Moderate	53.3
08	COLORADO (CO)	001	ADAMS COUNTY	0081.00	Middle	83
08	COLORADO (CO)	001	ADAMS COUNTY	0082.00	Moderate	71.49
08	COLORADO (CO)	001	ADAMS COUNTY	0083.08	Low	41.77
08	COLORADO (CO)	001	ADAMS COUNTY	0083.09	Moderate	57.7
08	COLORADO (CO)	001	ADAMS COUNTY	0083.54	Middle	95.47
08	COLORADO (CO)	001	ADAMS COUNTY	0083.55	Moderate	79.36
08	COLORADO (CO)	001	ADAMS COUNTY	0084.01	Middle	87.57
08	COLORADO (CO)	001	ADAMS COUNTY	0084.02	Middle	101.31
08	COLORADO (CO)	001	ADAMS COUNTY	0085.05	Moderate	76.23
08	COLORADO (CO)	001	ADAMS COUNTY	0085.06	Low	45.46
08	COLORADO (CO)	001	ADAMS COUNTY	0085.07	Middle	86.56
08	COLORADO (CO)	001	ADAMS COUNTY	0085.08	Moderate	78.24
08	COLORADO (CO)	001	ADAMS COUNTY	0085.24	Upper	122.91
08	COLORADO (CO)	001	ADAMS COUNTY	0085.26	Middle	114.41
08	COLORADO (CO)	001	ADAMS COUNTY	0085.33	Moderate	71.79

# Colorado Assessment Area

State Code	State	County Code	County	Tract Code	Tract Income Level	Tract Median Family Income %
08	COLORADO (CO)	001	ADAMS COUNTY	0085.34	Middle	90.43
08	COLORADO (CO)	001	ADAMS COUNTY	0085.35	Middle	99.95
08	COLORADO (CO)	001	ADAMS COUNTY	0085.36	Upper	120.56
08	COLORADO (CO)	001	ADAMS COUNTY	0085.38	Upper	125.63
08	COLORADO (CO)	001	ADAMS COUNTY	0085.40	Upper	121.42
08	COLORADO (CO)	001	ADAMS COUNTY	0085.44	Upper	133.69
08	COLORADO (CO)	001	ADAMS COUNTY	0085.45	Middle	116.12
08	COLORADO (CO)	001	ADAMS COUNTY	0085.46	Middle	89.35
08	COLORADO (CO)	001	ADAMS COUNTY	0085.47	Middle	95.99
08	COLORADO (CO)	001	ADAMS COUNTY	0085.48	Middle	104.66
08	COLORADO (CO)	001	ADAMS COUNTY	0085.49	Middle	98.43
08	COLORADO (CO)	001	ADAMS COUNTY	0085.50	Middle	97.92
08	COLORADO (CO)	001	ADAMS COUNTY	0085.51	Upper	147.39
08	COLORADO (CO)	001	ADAMS COUNTY	0085.52	Moderate	79.71
08	COLORADO (CO)	001	ADAMS COUNTY	0085.53	Upper	132.82
08	COLORADO (CO)	001	ADAMS COUNTY	0085.54	Middle	90.7
08	COLORADO (CO)	001	ADAMS COUNTY	0085.55	Moderate	77.85
08	COLORADO (CO)	001	ADAMS COUNTY	0085.56	Middle	105.17
08	COLORADO (CO)	001	ADAMS COUNTY	0085.57	Middle	119.96
08	COLORADO (CO)	001	ADAMS COUNTY	0085.58	Upper	120.63
08	COLORADO (CO)	001	ADAMS COUNTY	0085.59	Middle	84.09
08	COLORADO (CO)	001	ADAMS COUNTY	0085.60	Upper	169.34
08	COLORADO (CO)	001	ADAMS COUNTY	0085.61	Upper	122.12
08	COLORADO (CO)	001	ADAMS COUNTY	0085.62	Middle	107.37

# Colorado Assessment Area

State Code	State	County Code	County	Tract Code	Tract Income Level	Tract Median Family Income %
08	COLORADO (CO)	001	ADAMS COUNTY	0085.63	Middle	104.28
08	COLORADO (CO)	001	ADAMS COUNTY	0085.64	Moderate	69
08	COLORADO (CO)	001	ADAMS COUNTY	0085.65	Middle	91.16
08	COLORADO (CO)	001	ADAMS COUNTY	0086.03	Low	42.12
08	COLORADO (CO)	001	ADAMS COUNTY	0086.04	Moderate	68.29
08	COLORADO (CO)	001	ADAMS COUNTY	0086.05	Middle	110.7
08	COLORADO (CO)	001	ADAMS COUNTY	0086.06	Moderate	70.66
08	COLORADO (CO)	001	ADAMS COUNTY	0087.05	Low	48.8
08	COLORADO (CO)	001	ADAMS COUNTY	0087.06	Low	45.21
08	COLORADO (CO)	001	ADAMS COUNTY	0087.09	Moderate	56.62
08	COLORADO (CO)	001	ADAMS COUNTY	0088.01	Moderate	58.12
08	COLORADO (CO)	001	ADAMS COUNTY	0088.02	Moderate	55.17
08	COLORADO (CO)	001	ADAMS COUNTY	0089.01	Moderate	78.32
08	COLORADO (CO)	001	ADAMS COUNTY	0090.01	Moderate	64.96
08	COLORADO (CO)	001	ADAMS COUNTY	0090.03	Moderate	71.22
08	COLORADO (CO)	001	ADAMS COUNTY	0090.04	Moderate	66.1
08	COLORADO (CO)	001	ADAMS COUNTY	0091.01	Moderate	70.22
08	COLORADO (CO)	001	ADAMS COUNTY	0091.03	Moderate	53.49
08	COLORADO (CO)	001	ADAMS COUNTY	0091.04	Moderate	61.2
08	COLORADO (CO)	001	ADAMS COUNTY	0092.02	Moderate	57.38
08	COLORADO (CO)	001	ADAMS COUNTY	0092.03	Moderate	63.18
08	COLORADO (CO)	001	ADAMS COUNTY	0092.04	Moderate	74.83
08	COLORADO (CO)	001	ADAMS COUNTY	0092.06	Middle	91.48
08	COLORADO (CO)	001	ADAMS COUNTY	0092.07	Moderate	70.55

# Colorado Assessment Area

State Code	State	County Code	County	Tract Code	Tract Income Level	Tract Median Family Income %
08	COLORADO (CO)	001	ADAMS COUNTY	0093.04	Moderate	65.59
08	COLORADO (CO)	001	ADAMS COUNTY	0093.06	Moderate	61.58
08	COLORADO (CO)	001	ADAMS COUNTY	0093.07	Middle	83.45
08	COLORADO (CO)	001	ADAMS COUNTY	0093.08	Moderate	77.06
08	COLORADO (CO)	001	ADAMS COUNTY	0093.09	Moderate	76.33
08	COLORADO (CO)	001	ADAMS COUNTY	0093.10	Moderate	68.32
08	COLORADO (CO)	001	ADAMS COUNTY	0093.16	Low	49.55
08	COLORADO (CO)	001	ADAMS COUNTY	0093.18	Low	37.58
08	COLORADO (CO)	001	ADAMS COUNTY	0093.19	Low	35.64
08	COLORADO (CO)	001	ADAMS COUNTY	0093.20	Moderate	50.04
08	COLORADO (CO)	001	ADAMS COUNTY	0093.21	Moderate	60.27
08	COLORADO (CO)	001	ADAMS COUNTY	0093.22	Moderate	60.8
08	COLORADO (CO)	001	ADAMS COUNTY	0093.23	Moderate	66.87
08	COLORADO (CO)	001	ADAMS COUNTY	0093.25	Middle	92.37
08	COLORADO (CO)	001	ADAMS COUNTY	0093.26	Middle	89.87
08	COLORADO (CO)	001	ADAMS COUNTY	0093.27	Middle	89.33
08	COLORADO (CO)	001	ADAMS COUNTY	0094.01	Moderate	72.53
08	COLORADO (CO)	001	ADAMS COUNTY	0094.06	Moderate	78.92
08	COLORADO (CO)	001	ADAMS COUNTY	0094.07	Moderate	70.24
08	COLORADO (CO)	001	ADAMS COUNTY	0094.08	Middle	106.57
08	COLORADO (CO)	001	ADAMS COUNTY	0094.09	Upper	141.58
08	COLORADO (CO)	001	ADAMS COUNTY	0094.10	Upper	140.84
08	COLORADO (CO)	001	ADAMS COUNTY	0094.11	Middle	103.44
08	COLORADO (CO)	001	ADAMS COUNTY	0095.01	Moderate	68.08

# Colorado Assessment Area

State Code	State	County Code	County	Tract Code	Tract Income Level	Tract Median Family Income %
08	COLORADO (CO)	001	ADAMS COUNTY	0095.02	Moderate	68.76
08	COLORADO (CO)	001	ADAMS COUNTY	0095.53	Moderate	67.41
08	COLORADO (CO)	001	ADAMS COUNTY	0096.03	Moderate	63.18
08	COLORADO (CO)	001	ADAMS COUNTY	0096.04	Moderate	59.7
08	COLORADO (CO)	001	ADAMS COUNTY	0096.06	Moderate	68.59
08	COLORADO (CO)	001	ADAMS COUNTY	0096.07	Moderate	73.86
08	COLORADO (CO)	001	ADAMS COUNTY	0096.08	Middle	107.31
08	COLORADO (CO)	001	ADAMS COUNTY	0097.51	Moderate	73.14
08	COLORADO (CO)	001	ADAMS COUNTY	0097.52	Moderate	79.03
08	COLORADO (CO)	001	ADAMS COUNTY	0150.00	Low	47.42
08	COLORADO (CO)	001	ADAMS COUNTY	0600.01	Middle	98.15
08	COLORADO (CO)	001	ADAMS COUNTY	0600.02	Upper	155.27
08	COLORADO (CO)	001	ADAMS COUNTY	0601.00	Middle	117.69
08	COLORADO (CO)	001	ADAMS COUNTY	0602.00	Moderate	77.87
08	COLORADO (CO)	001	ADAMS COUNTY	0612.00	Upper	135.23
08	COLORADO (CO)	001	ADAMS COUNTY	9887.00	Not Known	0